



HIGH-QUALITY MOTOR  
MANUFACTURER

豫见品质 通达世界  
QUALITY MEET , WORLD WIDE



# CONTENTS

---

## Introduction

• Company profile .....	01
• Honor .....	03
• Work scene .....	05
• Materials Process .....	06

## Product range

• YBZ series high efficiency dust explosion-proof three-phase asynchronous vibration motor .....	07
• YBZU series vibration source flameproof three-phase asynchronous motor .....	12
• YBZD/ BZD/ YBZJ series explosion-proof three-phase asynchronous vibration motor .....	16
• YZS series high efficiency vibration motor (2nd generation) .....	20
• YZS series three-phase asynchronous vibration motor (1st generation) .....	24
• YTZU-A series three-phase asynchronous vibration motor .....	27
• MVG(E) European standard series three-phase asynchronous vibration motor .....	29
• VBG series three-phase asynchronous vibration motor .....	33
• YTCB side plate vibration motor .....	35
• YZO series three-phase asynchronous vibration motor .....	37
• YZU series three-phase asynchronous vibration motor .....	39
• YZUL series three-phase asynchronous vibration motor .....	41

## Installation and use

• Exciting force adjustment .....	43
• Vibration motor installation .....	44



# BRIEF INTRODUCTION

ADVANCED EQUIPMENT AND PROFESSIONAL TECHNICAL TEAM  
HELP TO PROVIDE THE BEST SOLUTION FOR OUR CUSTOMERS.

## COMPANY PROFILE

Founded in 1967, Henan Yutong Motor Co., Ltd, was founded in 1967. It is the most professional and the largest general motors manufacturers in Henan province.

Located in Xinxiang Economic Development Zone, it is a professional motor company integrating R&D, manufacturing, and sales. The company has its new product research and development center, rotor processing center, casting processing center, fully automatic embedding center, automatic environmental protection vacuum impregnation workshop, assembly workshop, high-efficiency motor punching base, sales company, foreign trade company, and a special product company.

There are more than 200 employees in the enterprise, and the total assets are 228 million.

The main products of our company include: YBZ series high efficiency dust explosion-proof vibration motors, YBZU series vibration source explosion-proof vibration motors, YZS series vibration motors, MVE series European standard vibration motors, YBZD (BZD, YBZJ) series explosion-proof vibration motors, YTZU series vibration Motors, VBG series vibration motors, YTCB side plate vibration motors, YZO series vibration motors, YZU series vibration motors, YEH/ YE3/ YE4/ YE5 series high-efficiency motors, YB3/ YBX4 series high efficiency explosion-proof motors, IE3 series small frame high-power motors, IE3 series special motors for nuclear power, Y3-400 low-voltage high-power motors, and the other hundred of models or specifications motors.





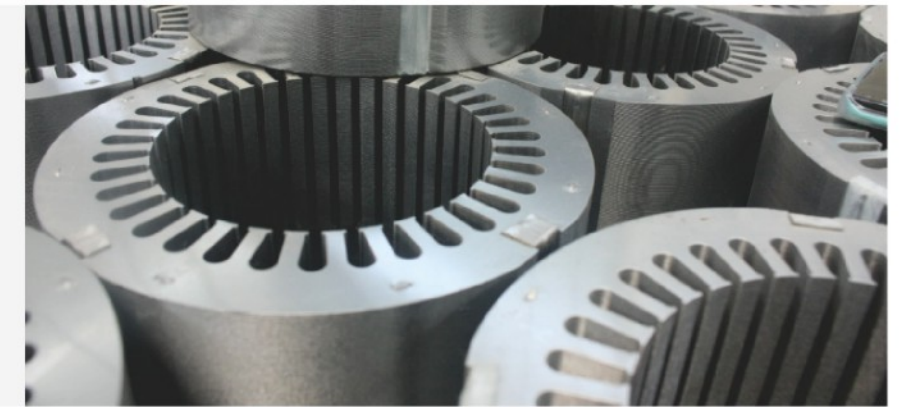
## WORK SCENE



## MATERIAL PROCESSING

### Cold rolled silicon steel sheet

Non-oriented electrical silicon steel: high-speed stamping, automatic lamination, lower resistance.

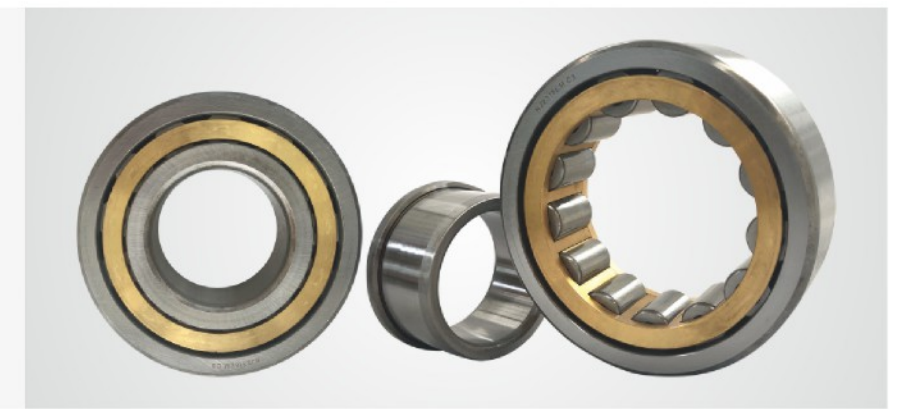


### 180° grade oxygen-free copper wire

180° grade anaerobic rod vibration motor special line. Low temperature, strong resistance to breakdown.

### Machining Accuracy bearings

Domestic first-line brand, high-strength, special bearings for vibration motors. Can be customized SKF, FAG, NSK and other brands.



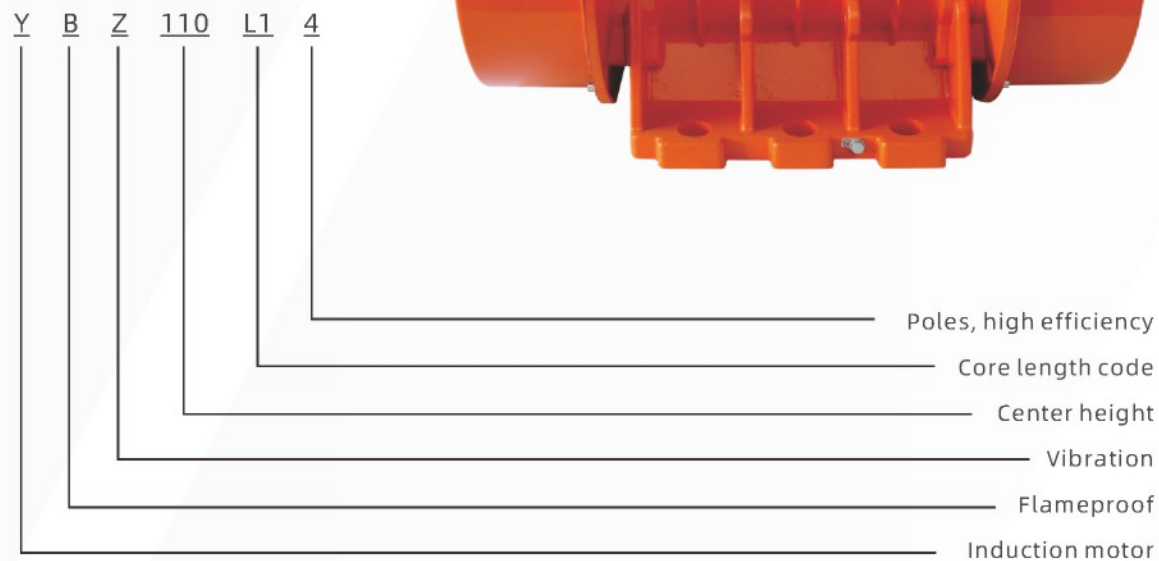
## YBZ SERIES HIGH EFFICIENCY DUST EXPLOSION-PROOF THREE-PHASE ASYNCHRONOUS VIBRATION MOTOR

YBZ series high-efficiency dust explosion-proof three-phase asynchronous vibration motor (hereinafter referred to as vibration motor) is a squirrel-cage three-phase asynchronous motor. The electrical performance of the product is implemented with the standard of Q/YTDJ905-2022 "YBZ series high-efficiency dust explosion-proof three-phase asynchronous vibration motor technical conditions (exciting force 3kN~130kN)".

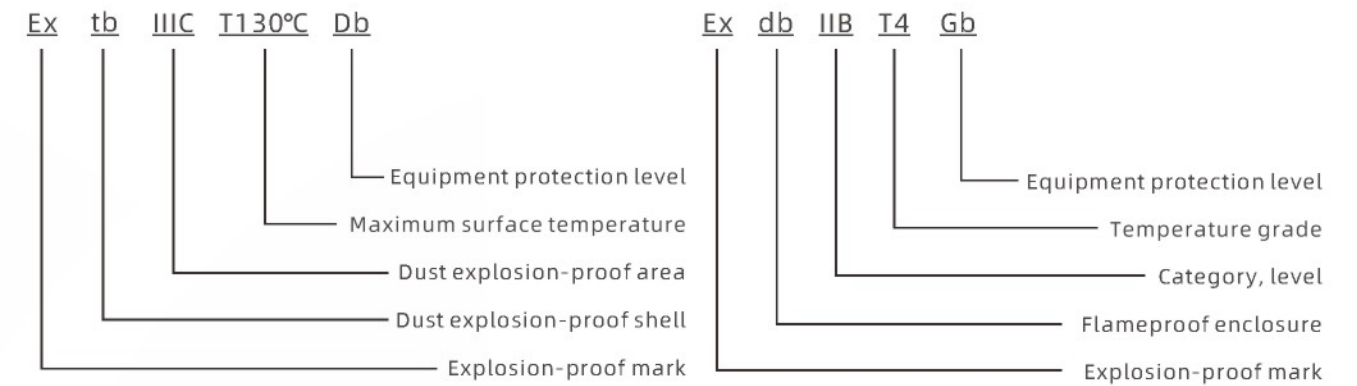
The explosion-proof performance of this series vibration motors complies with GB/T3836.1-2021 "Explosive Atmospheres Part 1: General Requirements for Equipment", GB/T3836.2-2021 "Explosive Atmospheres Part 2: Equipment protected by flameproof enclosure "d" ", GB/T3836.31-2021 "Explosive Atmospheres Environmental Part 31: Equipment Protected by a Dust Ignition-Proof Enclosure "t".



### Model Description



### Explosion-proof Mark Description



### Working Conditions of Vibration Motor

- The altitude does not exceed 1000 meters.
- Ambient air temperature is -20°C~+40°C.
- The relative humidity of the air is not more than 95% (at 25°C).
- Voltage: 380V, 660V, 380V/660V.
- Frequency: 50/60Hz.
- Working mode: S1 (continuous).
- Connection method: Y (380V),  $\Delta$ /Y ( $\Delta$ : 380V, Y: 660V).
- The poles' number of vibration motor is 2 poles, 4 poles, 6 poles, and 8 poles.

### Explosive-proof Points

This series of motors are flameproof motors. It is required that the flameproof casting should not be damaged, or the strong force will not produce the deformation affecting the flameproof performance characteristics when the explosive gas mixture inside the motor explodes. The internal explosion flame is not allowed to ignite the external explosive gas mixture through the flameproof joint surface of the shell. So that is the reason why:

The parts that make up the explosion-proof enclosure, such as machine base, end cover, bearing inner cover, junction box cover, junction box seat, etc., shall be subjected to static pressure test after finishing. The force is 1.5MPa, which lasts 10-12S, and the test result is qualified if there is no dripping.

The length, gap, surface roughness of the flameproof joint surface and the exposed conductors inside the junction box, the clearance and creepage of the exposed conductors and the metal shell are in line with national explosion-proof requirements.

The bolts connecting the flameproof enclosure are equipped with spring washers to prevent self-loosening. The mechanical property grade of the fastening bolt is 8.8, and the minimum tensile strength is 640MPa.

Machine base, end cover, bearing inner cover, terminal box seat, terminal bolt, terminal sleeve (or terminal board), shaft and gland are flameproof components.

2. Under the rated working condition, the surface temperature of the motor casing shall not exceed +130°C. The temperature outside the wire inlet must not be higher than the allowable temperature of the cable to ensure reliable operation of the cable.

### Appearance

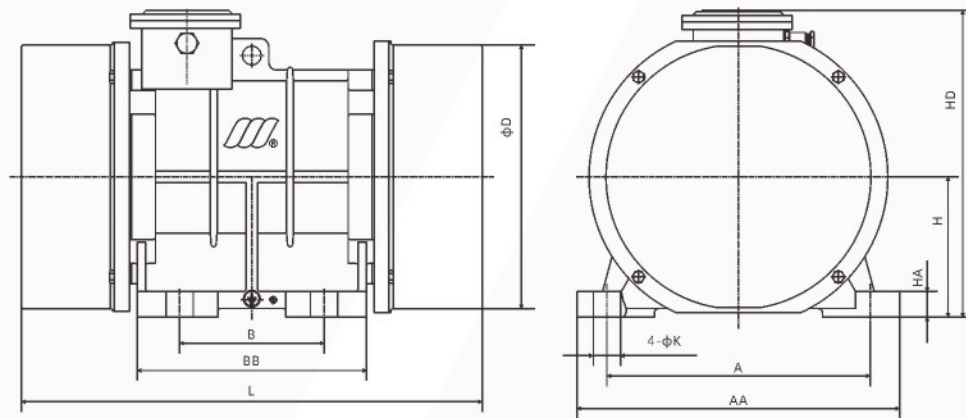


FIG1

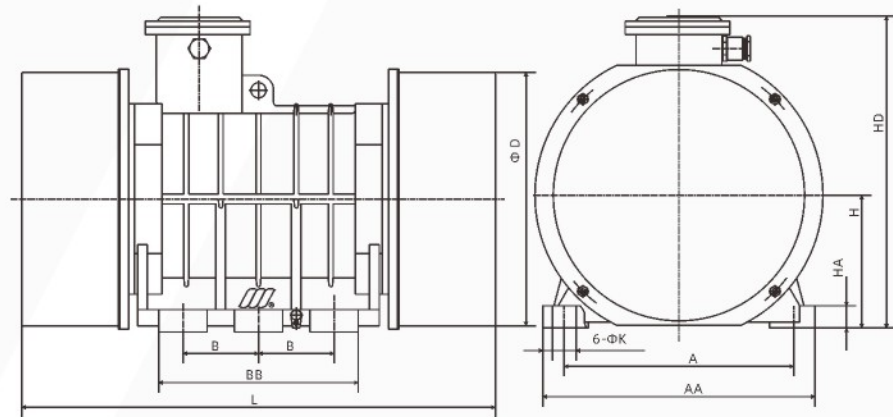


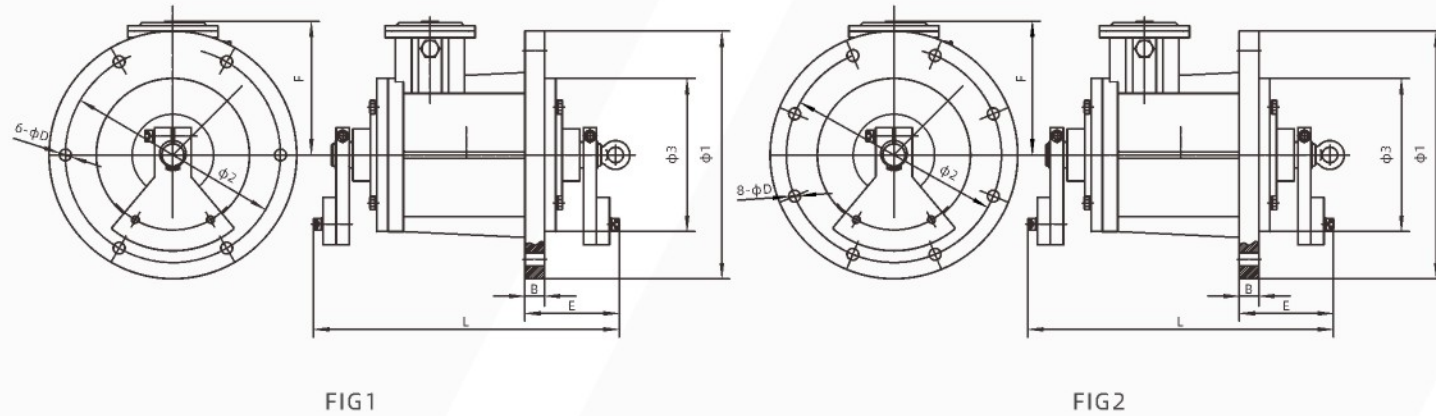
FIG2

### Main Technical Data (B3 Horizontal)

Model	Rated Force (kN)	Rated Power (kW)	Current (A)	Speed (r/min)	Installation Size (mm)									Installed Bolt	Weight (KG)	Figure	
					A	B	H	AA	BB	HA	HD	L	D				K
3 phase 2 pole																	
YBZ-110L1-2	3	0.25	0.77	2886	180	110	110	218	166	18	268	390	195	18	M16	32	FIG1
YBZ-110L2-2	5	0.37	1.1	2862	180	110	110	218	166	18	268	390	195	18	M16	33	FIG1
YBZ-120L1-2	3	0.25	0.73	2906	220	140	120	260	190	20	290	444	220	22	M20	41	FIG1
YBZ-120L2-2	5	0.37	1.05	2894	220	140	120	260	190	20	290	444	220	22	M20	42	FIG1
YBZ-120L3-2	8	0.55	1.39	2901	220	140	120	260	190	20	290	444	220	22	M20	44	FIG1
YBZ-120L4-2	10	0.75	1.87	2890	220	140	120	260	190	20	290	444	220	22	M20	46	FIG1
YBZ-120L5-2	15	1.1	2.59	2888	220	140	120	260	190	20	290	484	220	22	M20	48	FIG1
YBZ-140L1-2	20	1.5	3.41	2904	260	150	140	310	230	25	323	522	259	26	M24	67	FIG1
YBZ-165L1-2	30	2.2	4.95	2925	310	170	165	380	270	30	372	543	310	33	M30	94	FIG1
YBZ-165L2-2	40	3	6.34	2925	310	170	165	380	270	30	372	543	310	33	M30	117	FIG1
YBZ-200L1-2	50	3.7	7.98	2894	350	220	200	420	310	31	444	666	373	39	M36	168	FIG1

Model	Rated Force (kN)	Rated Power (kW)	Current (A)	Speed (r/min)	Installation Size (mm)									Installed Bolt	Weight (KG)	Figure	
					A	B	H	AA	BB	HA	HD	L	D				K
3 phase 4 pole																	
YBZ-110L1-4	3	0.18	0.66	1420	180	110	110	218	166	18	268	390	195	18	M16	34	FIG1
YBZ-110L2-4	5	0.25	0.88	1426	180	110	110	218	166	18	268	390	195	18	M16	36	FIG1
YBZ-120L1-4	3	0.18	0.69	1450	220	140	120	260	190	20	290	444	220	22	M20	40	FIG1
YBZ-120L2-4	5	0.25	0.91	1445	220	140	120	260	190	20	290	444	220	22	M20	42	FIG1
YBZ-120L3-4	8	0.37	1.1	1444	220	140	120	260	190	20	290	444	220	22	M20	44	FIG1
YBZ-120L4-4	10	0.55	1.65	1442	220	140	120	260	190	20	290	444	220	22	M20	47	FIG1
YBZ-120L5-4	15	0.75	1.99	1435	220	140	120	260	190	20	290	444	220	22	M20	57	FIG1
YBZ-140L1-4	15	0.75	2.2	1458	260	150	140	310	230	25	323	522	259	26	M24	70	FIG1
YBZ-140L2-4	20	1.1	2.97	1458	260	150	140	310	230	25	323	522	259	26	M24	76	FIG1
YBZ-165L1-4	30	1.5	4.5	1463	310	170	165	380	270	30	372	543	310	33	M30	111	FIG1
YBZ-165L2-4	40	1.8	4.51	1462	310	170	165	380	270	30	372	543	310	33	M30	130	FIG1
YBZ-200L1-4	50	2.2	5.47	1448	350	220	200	420	310	31	444	666	373	39	M36	180	FIG1
YBZ-220L1-4	75	3.7	9.46	1466	380	125	220	450	370	37	471	712	419	39	M36	278	FIG2
YBZ-220L2-4	100	6.3	15.4	1471	380	125	220	450	370	37	471	712	419	39	M36	311	FIG2
YBZ-240L1-4	100	6.3	14.4	1475	440	140	240	530	396	40	509	845	453	45	M42	380	FIG2
YBZ-240L2-4	130	7.5	16.7	1473	440	140	240	530	396	40	509	845	453	45	M42	410	FIG2
3 phase 6 pole																	
YBZ-110L1-6	3	0.25	0.94	933	180	110	110	218	166	18	268	410	195	18	M16	42	FIG1
YBZ-120L1-6	3	0.25	0.91	948	220	140	120	260	190	20	290	444	220	22	M20	49	FIG1
YBZ-120L2-6	5	0.37	1.32	945	220	140	120	260	190	20	290	484	220	22	M20	52	FIG1
YBZ-140L1-6	8	0.55	1.79	962	260	150	140	310	230	25	323	522	259	26	M24	76	FIG1
YBZ-140L2-6	10	0.75	2.42	960	260	150	140	310	230	25	323	522	259	26	M24	80	FIG1
YBZ-140L3-6	15	1.1	3.19	960	260	150	140	310	230	25	323	542	259	26	M24	90	FIG1
YBZ-165L1-6	15	1.1	3.41	976	310	170	165	380	270	30	372	543	310	33	M30	113	FIG1
YBZ-165L2-6	20	1.5	4.18	972	310	170	165	380	270	30	372	543	310	33	M30	123	FIG1
YBZ-165L3-6	30	2.2	5.72	960	310	170	165	380	270	30	372	583	310	33	M30	145	FIG1
YBZ-200L1-6	30	2.2	5.74	964	350	220	200	420	310	31	444	666	373	39	M36	190	FIG1
YBZ-200L2-6	40	3	7.9	967	350	220	200	420	310	31	444	666	373	39	M36	210	FIG1
YBZ-200L3-6	50	3.7	9.42	965	350	220	200	420	310	31	444	666	373	39	M36	225	FIG1
YBZ-220L1-6	50	3.7	9.45	969	380	125	220	450	370	37	471	712	419	39	M36	290	FIG2
YBZ-220L2-6	75	5.5	13.9	971	380	125	220	450	370	37	471	772	419	39	M36	338	FIG2
YBZ-240L1-6	75	5.5	13.2	985	440	140	240	530	396	40	509	845	453	45	M42	390	FIG2
YBZ-240L2-6	100	7.5	17.8	986	440	140	240	530	396	40	509	845	453	45	M42	435	FIG2
YBZ-240L3-6	120	9.5	21.7	985	440	140	240	530	396	40	509	885	453	45	M42	465	FIG2
3 phase 8 pole																	
YBZ-140L-8	5	0.37	1.36	704	260	150	140	310	230	25	323	522	259	26	M24	75	FIG1
YBZ-165L-8	10	0.75	2.44	717	310	170	165	380	270	30	372	543	310	33	M30	120	FIG1
YBZ-200L-8	20	1.5	4.88	718	350	220	200	420	310	31	444	666	373	39	M36	212	FIG1
YBZ-220L-8	30	2.2	3.97	728	380	125	220	450	370	37	471	712	419	39	M36	325	FIG2
YBZ-240L-8	50	3.7	11.3	734	440	140	240	530	396	40	509	845	453	45	M42	456	FIG2

### Appearance



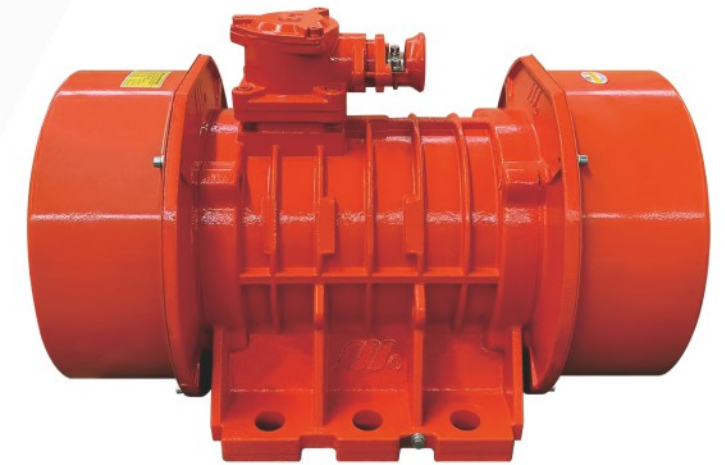
### Main Technical Data ( B5 Vertical)

Model	Rated Force (kN)	Rated Power (kW)	Current (A)	Speed (r/min)	Pole	φ1	φ2	φ3	B	N	D	L	E	F	Figure
YBZ 110L1-2	3	0.25	0.77	2886	2	300	252	180	20	6	14	400	104	160	FIG1
YBZ 110L2-2	5	0.37	1.1	2862	2	300	252	180	20	6	14	400	104	160	FIG1
YBZ 120L3-2	8	0.75	1.87	2890	2	310	258	210	22	6	18	425	112	175	FIG1
YBZ 120L4-2	10	0.75	1.87	2890	2	310	258	210	22	6	18	425	112	175	FIG1
YBZ 120L5-2	15	1.1	2.59	2888	2	380	330	230	26	6	18	450	122	185	FIG1
YBZ 140L1-2	20	1.5	3.41	2904	2	380	330	230	26	6	18/26△	450	122	185	FIG1
YBZ 165L1-2	30	2.2	4.95	2925	2	400	345	275	30	6	26	470	135	200	FIG1
YBZ 200L1-2	50	3.7	7.98	2894	2	440	390	316	30	8	26	540	160	235	FIG2
YBZ 110L1-4	3	0.18	0.69	1450	4	300	252	180	20	6	14	400	104	160	FIG1
YBZ 110L2-4	5	0.25	0.91	1445	4	300	252	180	20	6	14	400	104	160	FIG1
YBZ 120L3-4	8	0.55	1.65	1442	4	310	258	210	22	6	18	425	112	175	FIG1
YBZ 120L4-4	10	0.55	1.65	1442	4	310	258	210	22	6	18	425	112	175	FIG1
YBZ 140L1-4	15	0.75	2.2	1458	4	380	330	230	26	6	18	450	122	185	FIG1
YBZ 140L2-4	20	1.1	2.97	1458	4	380	330	230	26	6	18/26△	450	122	185	FIG1
YBZ 165L1-4	30	1.5	4.5	1463	4	400	345	275	30	6	26	470	135	200	FIG1
YBZ 200L1-4	50	2.2	5.47	1448	4	440	390	316	30	8	26	540	160	235	FIG2
YBZ 120L1-6	3	0.25	0.91	948	6	310	258	210	22	6	18	425	112	175	FIG1
YBZ 120L2-6	5	0.37	1.32	945	6	310	258	210	22	6	18	425	112	175	FIG1
YBZ 140L1-6	8	0.75	2.42	960	6	380	330	230	26	6	18	450	122	185	FIG1
YBZ 140L2-6	10	0.75	2.42	960	6	380	330	230	26	6	18	450	122	185	FIG1
YBZ 165L1-6	15	1.1	3.41	976	6	400	345	275	30	6	26	470	135	200	FIG1
YBZ 165L2-6	20	1.5	4.18	972	6	400	345	275	30	6	26	470	135	200	FIG1
YBZ 200L1-6	30	2.2	5.74	964	6	440	390	316	30	8	26	540	160	235	FIG2

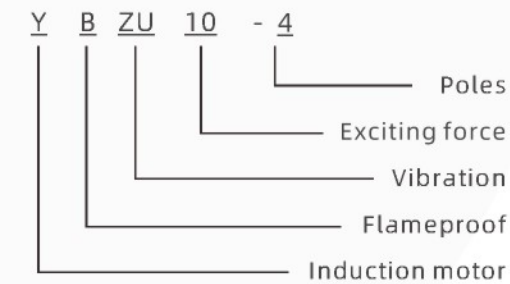
△Factory installation hole is φ18, if you need φ26, please communicate in advance.

## YBZU SERIES EXPLOSION-PROOF THREE-PHASE ASYNCHRONOUS VIBRATION MOTOR

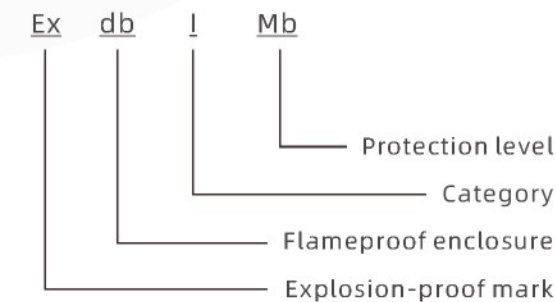
YBZU series vibration source explosion-proof three-phase asynchronous motor (hereinafter referred to as vibration motor) is a squirrel-cage three-phase asynchronous motor. The electric performance of our motors is implemented with the standard of Q/YTDJ906-2022 "YBZU series vibration source explosion-proof three-phase asynchronous vibration motor technical conditions (exciting force 3kN~130kN)". The explosion-proof performance of this series of vibration motors complies with GB/T3836.1-2021 "Explosive Atmospheres Part 1: General Requirements for Equipment" and GB/T3836.2-2021 "Explosive Atmospheres Part 2: Equipment Protected by Flameproof Enclosure "d", and the explosion-proof mark is Ex db I Mb, so our motors are applicable to the gas environment of underground coal mines (non-excavation face), and to some places with the flammability of methane or coal dust or the explosive mixture of steam and air, which are being used as the general powder equipment. The safety symbol of our motors is conforming to the standard of AQ1043-2007 "Safety Signs and Marks for Mining Products".



### Model Description



### Explosion-proof Mark Description Working Conditions of the Motor



- The altitude does not exceed 1000 meters.
- The ambient air temperature is -20°C~+40°C.
- The relative humidity of the air is not more than 95% (at 25°C).
- Voltage: 380V, 660V, 380V/660V.
- Frequency: 50/60Hz.
- Working mode: S1 (continuous).
- Connection method: Y (380V), △/Y (△: 380V, Y: 660V).
- The poles' number of the vibration motor is 2 poles, 4 poles, 6 poles, and 8 poles.

### Appearance

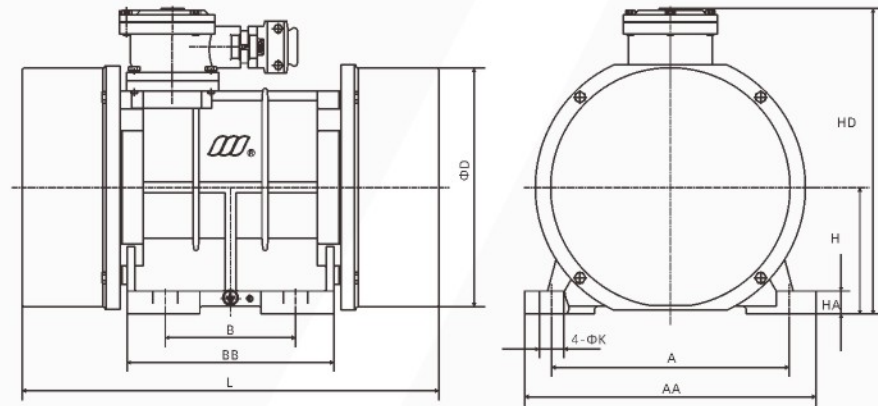


FIG1

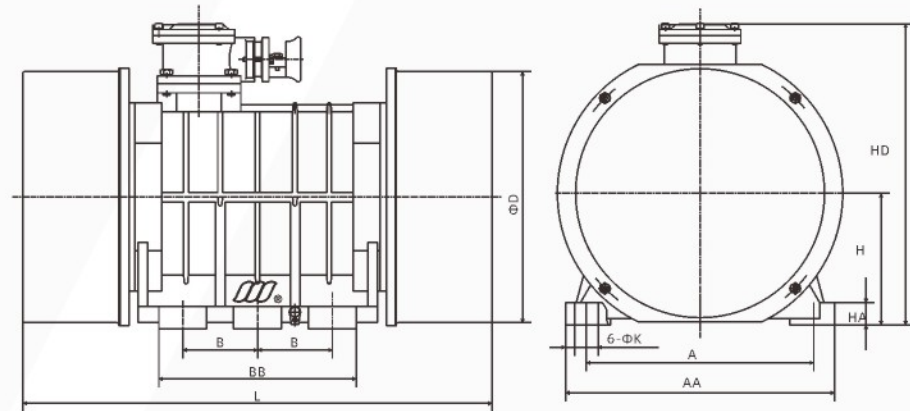


FIG2

### Main Technical Data (B3 Horizontal)

Model	Pole	Rated Force (kN)	Rated Power (kW)	A	B	H	K	AA	BB	HA	HD	L	D	Weight (KG)	Figure
3 phase 2 pole															
YBZU 3-2	2	3	0.25	180	110	110	18	218	166	18	303	390	195	33	FIG1
YBZU 3-2	2	3	0.25	220	140	120	22	260	190	20	317	444	220	42	FIG1
YBZU 5-2	2	5	0.37	180	110	110	18	218	166	18	303	390	195	34	FIG1
YBZU 5-2	2	5	0.37	220	140	120	22	260	190	20	317	444	220	45	FIG1
YBZU 10-2	2	10	0.75	180	110	110	18	218	166	18	303	390	195	37	FIG1
YBZU 10-2	2	10	0.75	220	140	120	22	260	190	20	317	444	220	48	FIG1
YBZU 15-2	2	15	1.1	220	140	120	22	260	190	20	317	444	220	50	FIG1
YBZU 20-2	2	20	1.5	260	150	140	26	310	230	25	350	522	259	68	FIG1
YBZU 30-2	2	30	2.2	310	170	165	33	380	270	30	398	543	310	95	FIG1
YBZU 50-2	2	50	3.7	350	220	200	39	420	310	31	476	666	373	170	FIG1

Model	Pole	Rated Force (kN)	Rated Power (kW)	A	B	H	K	AA	BB	HA	HD	L	D	Weight (KG)	Figure
3 phase 4 pole															
YBZU 3-4	4	3	0.18	180	110	110	18	218	166	18	303	390	195	35	FIG1
YBZU 3-4	4	3	0.18	220	140	120	22	260	190	20	317	444	220	45	FIG1
YBZU 5-4	4	5	0.25	180	110	110	18	218	166	18	303	390	195	37	FIG1
YBZU 5-4	4	5	0.25	220	140	120	22	260	190	20	317	444	220	43	FIG1
YBZU 10-4	4	10	0.55	220	140	120	22	260	190	20	317	444	220	48	FIG1
YBZU 15-4	4	15	0.75	220	140	120	22	260	190	20	317	444	220	58	FIG1
YBZU 15-4	4	15	0.75	260	150	140	26	310	230	25	350	522	259	72	FIG1
YBZU 20-4	4	20	1.1	260	150	140	26	310	230	25	350	522	259	78	FIG1
YBZU 30-4	4	30	1.5	310	170	165	33	380	270	30	398	543	310	113	FIG1
YBZU 50-4	4	50	2.2	350	220	200	39	420	310	31	476	666	373	183	FIG1
YBZU 75-4	4	75	3.7	380	125	220	39	450	370	37	501	712	419	280	FIG2
YBZU 100-4	4	100	6.3	380	125	220	39	450	370	37	501	712	419	316	FIG2
YBZU 100-4	4	100	6.3	440	140	240	45	530	396	40	546	845	453	385	FIG2
YBZU 130-4	4	130	7.5	440	140	240	45	530	396	40	546	845	453	415	FIG2
3 phase 6 pole															
YBZU 3-6	6	3	0.25	180	110	110	18	218	166	18	303	410	195	43	FIG1
YBZU 3-6	6	3	0.25	220	140	120	22	260	190	20	317	444	220	50	FIG1
YBZU 5-6	6	5	0.37	220	140	120	22	260	190	20	317	484	220	53	FIG1
YBZU 10-6	6	10	0.75	260	150	140	26	310	230	25	350	522	259	82	FIG1
YBZU 15-6	6	15	1.1	260	150	140	26	310	230	25	350	543	259	92	FIG1
YBZU 15-6	6	15	1.1	310	170	165	33	380	270	30	398	543	310	115	FIG1
YBZU 20-6	6	20	1.5	310	170	165	33	380	270	30	398	543	310	125	FIG1
YBZU 30-6	6	30	2.2	310	170	165	33	380	270	30	398	583	310	147	FIG1
YBZU 30-6	6	30	2.2	350	220	200	39	420	310	31	476	666	373	190	FIG1
YBZU 40-6	6	40	3	350	220	200	39	420	310	31	476	666	373	215	FIG1
YBZU 50-6	6	50	3.7	350	220	200	39	420	310	31	476	666	373	230	FIG1
YBZU 50-6	6	50	3.7	380	125	220	39	450	370	37	501	712	419	292	FIG2
YBZU 75-6	6	75	5.5	380	125	220	39	450	370	37	501	772	419	342	FIG2
YBZU 75-6	6	75	5.5	440	140	240	45	530	396	40	546	845	453	380	FIG2
YBZU 100-6	6	100	7.5	440	140	240	45	530	396	40	546	845	453	435	FIG2
YBZU 120-6	6	120	9.0	440	140	240	45	530	396	40	546	885	453	470	FIG2
3 phase 8 pole															
YBZU 10-8	8	10	0.75	310	170	165	33	380	270	30	398	543	310	122	FIG1
YBZU 20-8	8	20	1.5	350	220	200	39	420	310	31	476	666	373	215	FIG1
YBZU 30-8	8	30	2.2	380	125	220	39	450	370	37	501	712	419	325	FIG2
YBZU 50-8	8	50	3.7	440	140	240	45	530	396	40	546	845	453	460	FIG2

## Appearance

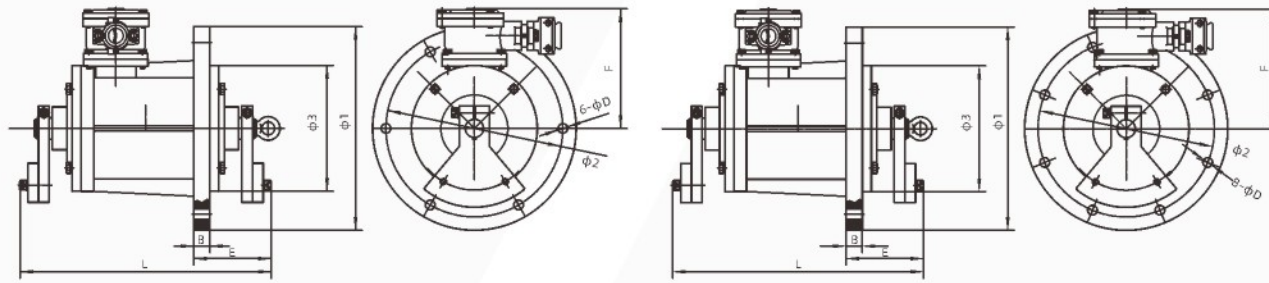


FIG1

FIG2

## Main Technical Data (B5 Vertical)

Model	Pole	Rated Force (kN)	Rated Power (kW)	Φ1	Φ2	Φ3	B	N	D	L	E	F	Figure
YBZU 3-2	2	3	0.25	300	252	180	20	6	14	400	104	200	FIG1
YBZU 5-2	2	5	0.37	300	252	180	20	6	14	400	104	200	FIG1
YBZU 10-2	2	10	0.75	310	258	210	22	6	18	425	112	215	FIG1
YBZU 15-2	2	15	1.1	380	330	230	26	6	18	450	122	225	FIG1
YBZU 20-2	2	20	1.5	380	330	230	26	6	18/26Δ	450	122	225	FIG1
YBZU 30-2	2	30	2.2	400	345	275	30	6	26	470	135	240	FIG1
YBZU 50-2	2	50	3.7	440	390	316	30	8	26	540	160	275	FIG2
YBZU 3-4	4	3	0.18	300	252	180	20	6	14	400	104	200	FIG1
YBZU 5-4	4	5	0.25	300	252	180	20	6	14	400	104	200	FIG1
YBZU 10-4	4	10	0.55	310	258	210	22	6	18	425	112	215	FIG1
YBZU 15-4	4	15	0.75	380	330	230	26	6	18	450	122	225	FIG1
YBZU 20-4	4	20	1.1	380	330	230	26	6	18/26Δ	450	122	225	FIG1
YBZU 30-4	4	30	1.5	400	345	275	30	6	26	470	135	240	FIG1
YBZU 50-4	4	50	2.2	440	390	316	30	8	26	540	160	275	FIG2
YBZU 3-6	6	3	0.25	310	258	210	22	6	18	425	112	215	FIG1
YBZU 5-6	6	5	0.37	310	258	210	22	6	18	425	112	215	FIG1
YBZU 10-6	6	10	0.75	380	330	230	26	6	18	450	122	225	FIG1
YBZU 15-6	6	15	1.1	400	345	275	30	6	26	470	135	240	FIG1
YBZU 20-6	6	20	1.5	400	345	275	30	6	26	470	135	240	FIG1
YBZU 30-6	6	30	2.2	440	390	316	30	8	26	540	160	275	FIG2

△Factory installation hole is Φ18, if you need Φ26, please communicate in advance.

## YBZD/BZD/YBZJ SERIES EXPLOSION-PROOF THREE-PHASE ASYNCHRONOUS MOTOR

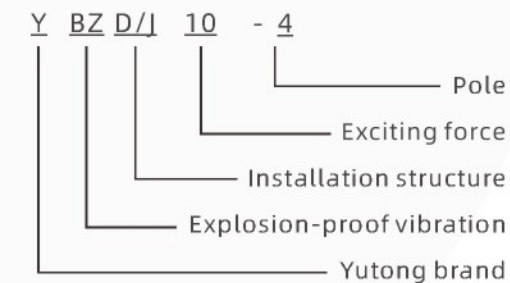
The explosion-proof three-phase asynchronous vibration motor (hereinafter referred to as the vibration motor) is a squirrel-cage three-phase asynchronous motor. The electrical performance of this product complies with the standard of Q/YTDJ909-2022 "Technical Conditions for Explosion-proof Three-phase Asynchronous Vibration Motor (Exciting Force 0.6kN~300kN)".

The explosion-proof performance of this series vibration motors complies with GB/T3836.1-2021 "Explosive Atmosphere Part 1: General Requirements for Equipment", GB/T3836.2-2021 "Explosive Atmosphere Part 2: Equipment Protected by Flameproof Enclosure "d" ", GB/T3836.31-2021 "Explosive Atmospheres Part 31: Equipment Protected by Dust Ignition-Proof Enclosure "t"".

The explosion-proof marks are Ex db IIC T4 Gb, Ex tb IIC T130°C Db, it means our motors are suitable for the explosive gas atmospheres in Zone 1 and Zone 2 of IIA, IIB, IIC and temperature groups T1~T4 in the factory environment, or in Zone 21, Zone 22, where the maximum surface temperature does not exceed 130 °C, IIIA flammable flying catkins, IIIB flammable dust, IIC flammable conductive dust environment, in which our motors are used as general power equipment.



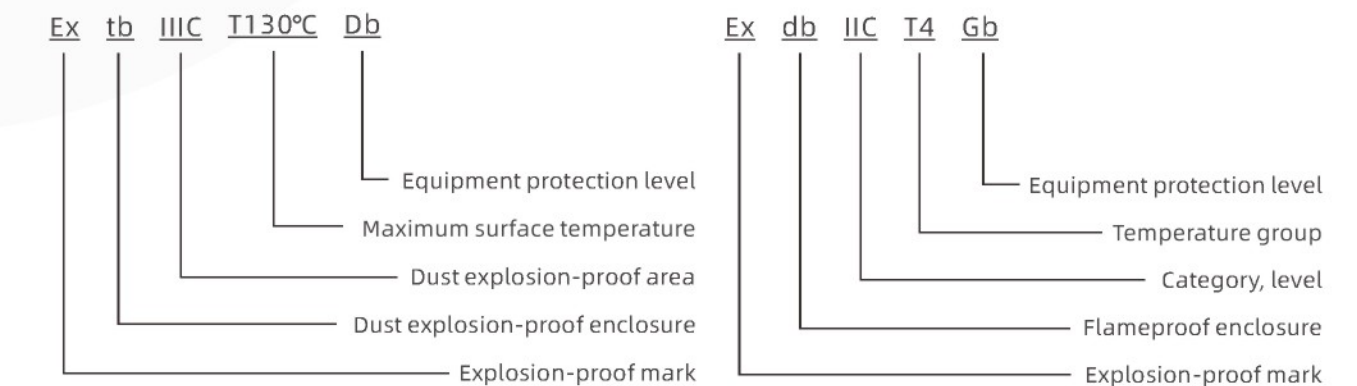
### Model Description



### Working Conditions of the Motor:

- The altitude does not exceed 1000 meters.
- The ambient air temperature is -20°C~+40°C.
- The relative humidity of the air is not more than 95% (at 25°C).
- Voltage: 380V, 660V, 380V/660V.
- Frequency: 50/60Hz.
- Working mode: S1 (continuous).
- Connection method: Y (380V), Δ/Y (Δ: 380V, Y: 660V).
- The poles' number of vibration motor is 2 poles, 4 poles, 6 poles, and 8 poles.

### Explosion-proof Mark Description



### Appearance

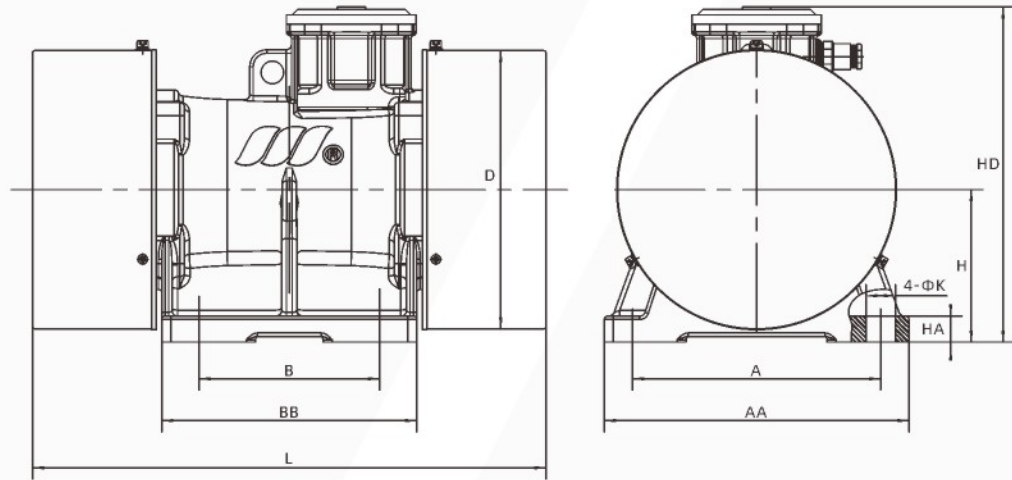


FIG1

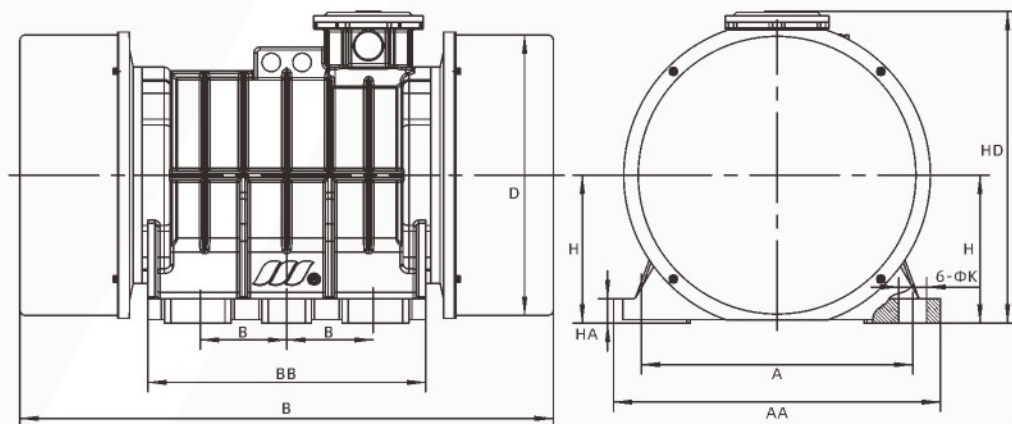


FIG2

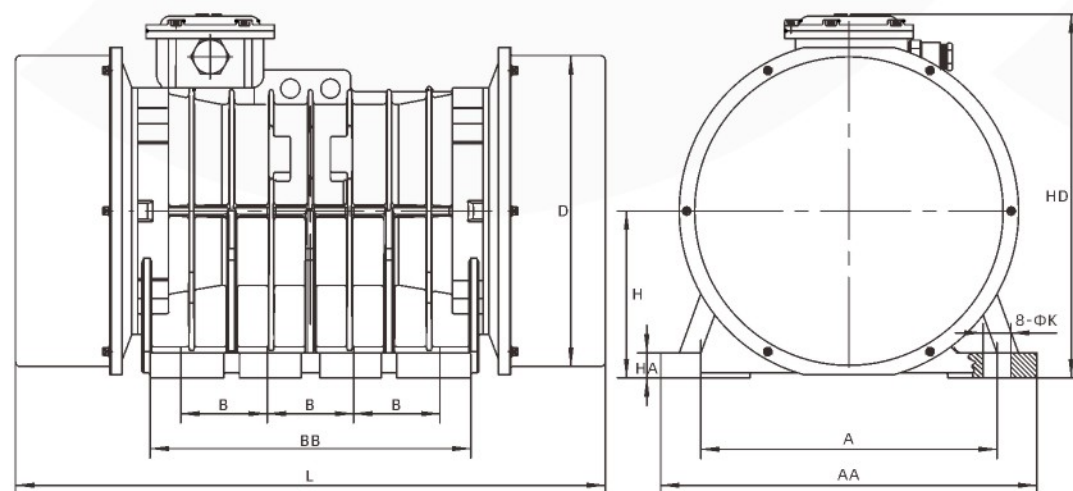


FIG3

Model	Pole	Rated Force (kN)	Rated Power (kW)	Current (A)	Speed (r/min)	A	B	H	AA	BB	HA	HD	L	D	K	Weight (KG)	Figure
3 phase 2 pole																	
1.5-2	2	1.5	0.18	0.52	2890	150	90	102	220	162	16	250	328	165	14	25	FIG1
2.5-2	2	2.5	0.25	0.75	2890	180	110	102	220	162	16	250	328	165	18	25	FIG1
5-2	2	5	0.4	1.1	2890	180	140	115	220	196	18	267	376	208	18	35	FIG1
8-2	2	8	0.55	1.7	2893	180	140	115	220	196	18	267	376	208	18	37	FIG1
10-2	2	10	0.75	1.85	2893	180	140	115	220	196	18	267	376	208	18	40	FIG1
16-2	2	16	1.1	3	2890	220	160	135	280	230	23	297	457	247	26	51	FIG1
20-2	2	20	1.5	3.41	2890	220	160	135	280	230	23	297	457	247	26	55	FIG1
30-2	2	30	2.2	4.7	2945	260	180	165	325	265	27	338	510	310	26	88	FIG1
40-2	2	40	3	6.34	2900	320	200	190	395	300	29	397	562	356	33	125	FIG1
50-2	2	50	3.7	7.98	2900	320	200	190	395	300	29	397	562	356	33	132	FIG1
3 phase 4 pole																	
1.5-4	4	1.5	0.12	0.43	1430	150	90	102	220	162	16	250	328	165	14	27	FIG1
2.5-4	4	2.5	0.13	0.45	1427	180	110	102	220	162	16	250	328	165	14	29	FIG1
5-4	4	5	0.25	0.9	1427	180	110	102	220	162	16	250	348	165	14	32	FIG1
8-4	4	8	0.45	1.5	1442	180	140	115	220	196	18	267	376	208	18	43	FIG1
10-4	4	10	0.55	1.8	1444	180	140	115	220	196	18	267	416	208	18	44	FIG1
16-4	4	16	0.75	1.9	1445	220	160	135	280	230	23	297	457	247	26	60	FIG1
20-4	4	20	1.1	2.62	1445	220	160	135	280	230	23	297	457	247	26	63	FIG1
30-4	4	30	1.5	3.32	1445	260	180	165	325	265	27	338	510	310	33	98	FIG1
40-4	4	40	1.8	4.75	1475	320	200	190	395	300	29	397	562	356	33	138	FIG1
50-4	4	50	2.2	5.4	1475	320	200	190	395	300	29	397	562	356	33	149	FIG1
75-4	4	75	3.7	7.88/4.55	1475	320	200	200	420	310	31	444	666	373	33	195	FIG1
75-4	4	75	3.7	7.88/4.55	1475	380	125	220	450	370	37	501	712	419	39	275	FIG2
100-4	4	100	5.5	12.9/7.2	1477	370	200	220	450	370	37	501	665	419	39	305	FIG1
100-4	4	100	5.5	12.9/7.2	1477	380	125	220	450	370	37	501	712	419	39	311	FIG2
130-4	4	130	7.5	15.5/9	1480	440	140	240	530	396	40	546	845	453	45	410	FIG2
140-4	4	140	9	18.5/10.7	1475	480	140	270	610	520	40	589	956	555	45	595	FIG3
160-4	4	160	10	21.8/12.6	1475	480	140	270	610	520	40	589	956	555	45	605	FIG3
180-4	4	180	11	23.9/13.8	1475	480	140	270	610	520	40	589	956	555	45	630	FIG3

Model	Pole	Rated Force (kN)	Rated Power (kW)	Current (A)	Speed (r/min)	A	B	H	AA	BB	HA	HD	L	D	K	Weight (KG)	Figure
3 phase 6 pole																	
2.5-6	6	2.5	0.25	0.8	950	180	140	115	220	196	18	267	376	208	14	42	FIG1
5-6	6	5	0.4	1.32	945	180	140	115	220	196	18	267	416	208	18	46	FIG1
8-6	6	8	0.55	1.7	960	220	160	135	280	230	23	297	457	247	18	62	FIG1
10-6	6	10	0.75	2.24	960	220	160	135	280	230	23	297	457	247	18	66	FIG1
16-6	6	16	1.1	3.37	960	260	180	165	325	265	27	338	510	310	26	98	FIG1
20-6	6	20	1.5	3.8	960	260	180	165	325	265	27	338	510	310	26	105	FIG1
30-6	6	30	2.2	6.1	970	320	200	190	395	300	29	397	562	356	33	156	FIG1
40-6	6	40	3	8	970	320	200	190	395	300	29	397	602	356	33	172	FIG1
50-6	6	50	3.7	9.0/5.2	980	370	200	200	440	310	31	444	666	373	39	220	FIG1
50-6	6	50	3.7	9.0/5.2	980	380	125	220	450	370	37	501	712	419	39	291	FIG2
75-6	6	75	5.5	13.3/7.68	980	370	250	220	450	370	37	501	772	419	39	335	FIG1
75-6	6	75	5.5	13.3/7.68	980	380	125	220	450	370	37	501	772	419	39	335	FIG2
100-6	6	100	7.5	17.5/10.1	982	420	150	240	530	396	40	546	845	453	45	430	FIG2
100-6	6	100	7.5	17.5/10.1	982	440	140	240	530	396	40	546	845	453	45	430	FIG2
120-6	6	120	9	19.3/11.1	982	440	140	240	530	396	40	546	885	453	45	462	FIG2
130-6	6	130	9	19.3/11.1	980	420	150	240	530	396	40	546	885	453	45	479	FIG2
130-6	6	130	9	19.3/11.1	980	440	140	240	530	396	40	546	885	453	45	479	FIG2
140-6	6	140	10	20.6/11.9	985	480	140	270	610	520	40	589	956	555	45	630	FIG3
160-6	6	160	11	23.6/13.6	982	480	140	270	610	520	40	589	956	555	45	690	FIG3
180-6	6	180	13	27.1/15.7	982	520	140	270	610	520	40	589	956	555	45	720	FIG3
200-6	6	200	15	30.5/17.6	985	600	140	310	700	550	45	650	1030	595	45	865	FIG3
220-6	6	220	15	30.5/17.6	985	600	140	310	700	550	45	650	1030	595	45	885	FIG3
240-6	6	240	18	36.5/21.1	985	600	140	310	700	550	45	650	1030	595	45	925	FIG3
260-6	6	260	18	36.5/21.1	985	600	140	310	700	550	45	650	1050	595	45	955	FIG3
300-6	6	300	23	46.3/26.7	985	600	140	310	700	550	45	650	1050	595	45	1000	FIG3
3 phase 8 pole																	
20-8	8	20	1.5	4.88	730	350	220	200	420	310	31	444	666	373	39	210	FIG1
30-8	8	30	2.2	3.97/2.3	730	380	125	220	450	370	37	501	712	419	39	320	FIG2
50-8	8	50	3.7	11.3/6.5	735	440	140	240	530	396	40	546	845	453	45	455	FIG2
75-8	8	75	5.5	15.1/8.71	735	440	140	240	530	396	40	546	845	453	45	490	FIG2
100-8	8	100	7.5	17.9/10.3	733	480	140	270	610	520	40	589	956	555	45	705	FIG3
135-8	8	135	9	21.3/12.3	735	480	140	270	610	520	40	589	1016	555	45	745	FIG3
160-8	8	160	11	25.8/14.9	735	600	140	310	700	550	45	650	1050	595	45	925	FIG3
180-8	8	180	13	31.5/18.2	735	600	140	310	700	550	45	650	1050	595	45	970	FIG3
200-8	8	200	15	33.9/19.6	735	600	140	310	700	550	45	650	1100	595	45	995	FIG3

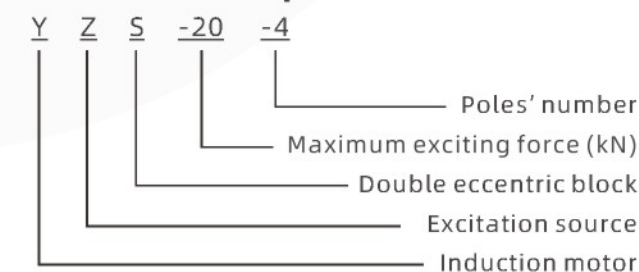
## YZS SERIES HIGH EFFICIENCY VIBRATION MOTOR (SECOND GENERATION)

YZS series high-efficiency vibrating motor is the excitation source of those various vibrating machinery, which is widely used in vibration feeding, vibration conveying, vibration beneficiation, vibration screening and vibration anti-blocking of silos, etc. in the fields such as electric power, food, chemical industry, metallurgy, building materials, coal, mining, light industry, cement, railway, port, etc.

The main features of this series motor are small size, light weight, strong exciting force, stable amplitude, stepless adjustment of the exciting force, fully sealed casing. This series motor can work in any dusty conditions without the explosion-proof requirements, whose protection level is IP55 and whose insulation level is F, while IP65 protection level can be made. Working conditions: the altitude is below 1000 meters, the ambient temperature is -15~40°C, the cooling method is IC410, and the working method is S1 (continuous fixed duty system).



### Model Description



### Working Conditions of the Motor

- The altitude does not exceed 1000 meters.
- The ambient air temperature is -15°C~+40°C.
- The relative humidity of the air is not more than 90%.
- Voltage: 220V/380V.
- Working mode: S1 (continuous).
- Connection method: Δ/Y
- The poles' number of the vibration motor is 2 poles, 4 poles, 6 poles, and 8 poles.

### Appearance

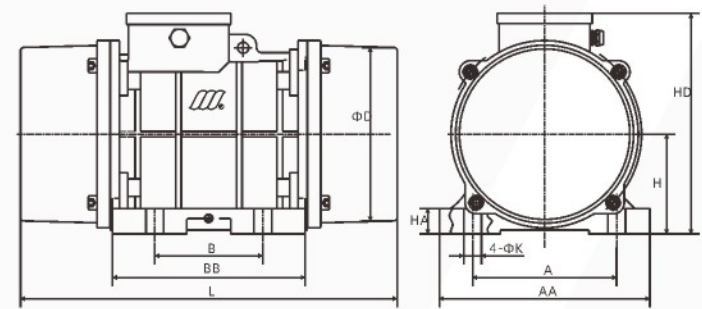


FIG1

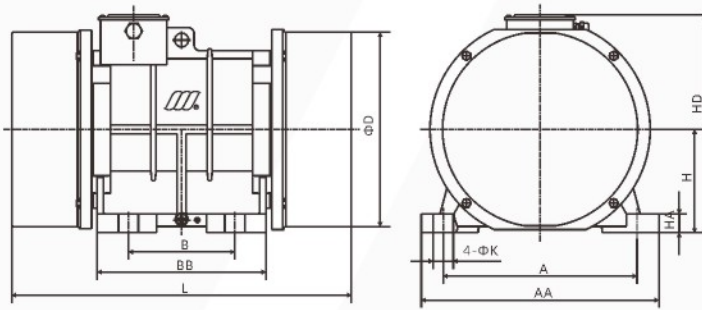


FIG2

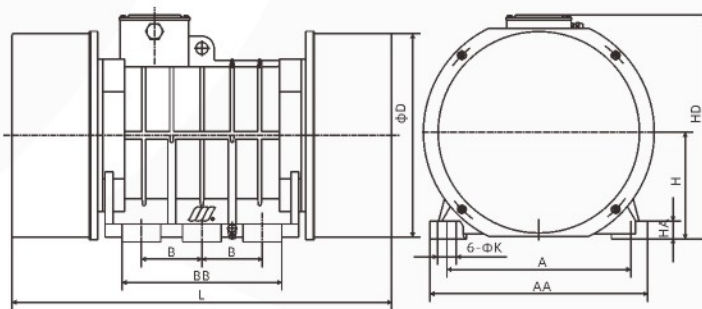


FIG3

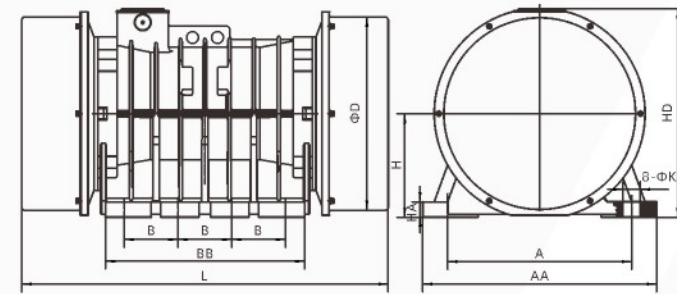


FIG4

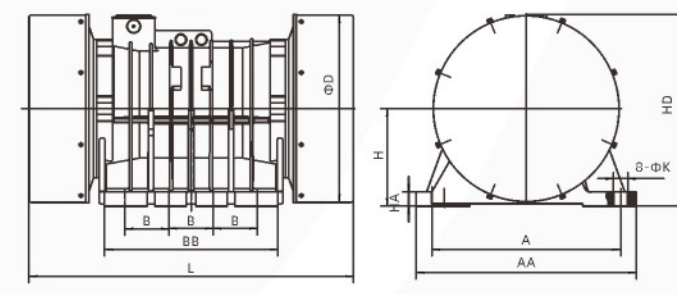


FIG5

### Main Technical Data

Model	Rated Force (kN)	Rated Power (kw)	Current (A)	Speed (r/min)	Installation Size (mm)									Installed Bolt	Weight (KG)	Figure	
					A	B	H	AA	BB	HA	HD	L	D				K
<b>3 phase 2 pole</b>																	
YZS-1-2	1	0.09	0.45	2800	130	80	80	155	160	15	183	303	135	12	M10	10	FIG1
YZS-1.5-2	1.5	0.12	0.52	2768	130	80	80	155	160	15	183	303	135	12	M10	10	FIG1
YZS-2.5-2	2.5	0.22	0.52	2768	130	80	80	155	160	15	183	303	135	12	M10	10	FIG1
YZS-3-2	3	0.25	0.71	2875	150	90	90	190	177	23	190	340	160	13	M12	15	FIG1
YZS-5-2	5	0.37	1.15	2874	150	90	90	190	177	23	190	340	160	13	M12	16	FIG1
YZS-8-2	8	0.55	1.39	2880	180	110	110	218	166	18	240	390	195	18	M16	31	FIG2
YZS-10-2	10	0.75	1.8	2878	180	110	110	218	166	18	240	390	195	18	M16	32	FIG2
YZS-15-2	15	1.1	2.59	2888	220	140	120	260	190	20	260	444	220	22	M20	48	FIG2
YZS-20-2	20	1.5	3.41	2904	260	150	140	310	230	25	293	522	259	26	M24	65	FIG2
YZS-25-2	25	2.2	4.85	2927	310	170	165	380	270	30	341	543	310	33	M30	88	FIG2
YZS-30-2	30	2.2	4.95	2925	310	170	165	380	270	30	341	543	310	33	M30	92	FIG2
YZS-40-2	40	3.7	7.87	2895	350	220	200	420	310	31	402	666	373	39	M36	155	FIG2
YZS-50-2	50	3.7	7.98	2894	350	220	200	420	310	31	402	666	373	39	M36	160	FIG2
<b>3 phase 4 pole</b>																	
YZS-1-4	1	0.09	0.43	1319	130	80	80	155	160	15	183	303	135	12	M10	12	FIG1
YZS-1.5-4	1.5	0.12	0.43	1319	130	80	80	155	160	15	183	303	135	12	M10	12	FIG1
YZS-2-4	2	0.12	0.41	1341	130	80	80	155	160	15	183	303	135	12	M10	13	FIG1
YZS-2.5-4	2.5	0.18	0.63	1419	150	90	90	190	177	23	190	340	160	13	M12	17	FIG1
YZS-3-4	3	0.18	0.63	1419	150	90	90	190	177	23	190	340	160	13	M12	18	FIG1
YZS-5-4	5	0.25	0.73	1414	180	110	110	218	166	18	240	390	195	18	M16	33	FIG2
YZS-8-4	8	0.37	1.03	1412	220	140	120	260	190	20	260	444	220	22	M20	38	FIG2
YZS-10-4	10	0.55	1.5	1442	220	140	120	260	190	20	260	444	220	22	M20	40	FIG2
YZS-15-4	15	0.75	2.1	1458	260	150	140	310	230	25	293	522	259	26	M24	65	FIG2
YZS-20-4	20	1.1	2.97	1458	260	150	140	310	230	25	293	522	259	26	M24	71	FIG2
YZS-25-4	25	1.5	3.89	1467	310	170	165	380	270	30	341	543	310	33	M30	98	FIG2
YZS-30-4	30	1.5	3.96	1463	310	170	165	380	270	30	341	543	310	33	M30	104	FIG2
YZS-40-4	40	2.2	5.4	1451	310	170	165	380	270	30	341	543	310	33	M30	120	FIG2
YZS-50-4	50	2.2	5.47	1448	350	220	200	420	310	31	402	666	373	39	M36	175	FIG2
YZS-75-4	75	3.7	9.46	1466	380	125	220	450	370	37	435	712	419	39	M36	292	FIG3
YZS-100-4	100	6.3	14.4	1475	380	125	220	450	370	37	435	712	419	39	M36	305	FIG3
YZS-100-4	100	6.3	14.4	1475	440	140	240	530	396	40	472	845	453	45	M42	375	FIG3
YZS-130-4	130	7.5	16.7	1473	440	140	240	530	396	40	509	845	453	45	M42	395	FIG3
YZS-140-4	140	9	18.5	1475	480	140	270	610	520	40	589	956	555	45	M42	590	FIG4
YZS-160-4	160	10	21.8	1475	480	140	270	610	520	40	589	956	555	45	M42	600	FIG4
YZS-180-4	180	11	23.9	1475	480	140	270	610	520	40	589	956	555	45	M42	630	FIG4

### Main Technical Data

Model	Rated Force (kN)	Rated Power (kW)	Current (A)	Speed (r/min)	Installation Size (mm)									Installed Bolt	Weight (KG)	Figure	
					A	B	H	AA	BB	HA	HD	L	D				K
3 phase 6 pole																	
YZS-3-6	3	0.25	0.85	933	180	110	110	218	166	18	240	410	195	18	M16	38	FIG2
YZS-5-6	5	0.37	1.32	945	220	140	120	260	190	20	260	484	220	22	M20	49	FIG2
YZS-8-6	8	0.55	1.9	961	260	150	140	310	230	25	293	522	259	26	M24	72	FIG2
YZS-10-6	10	0.75	2.42	960	260	150	140	310	230	25	293	522	259	26	M24	75	FIG2
YZS-15-6	15	1.1	3.41	976	310	170	165	380	270	30	341	543	310	33	M30	110	FIG2
YZS-20-6	20	1.5	4.18	972	310	170	165	380	270	30	341	543	310	33	M30	120	FIG2
YZS-25-6	25	2.2	5.69	961	310	170	165	380	270	30	341	543	310	33	M30	125	FIG2
YZS-30-6B	30	2.2	5.72	960	310	170	165	380	270	30	341	583	310	33	M30	128	FIG2
YZS-30-6	30	2.2	5.74	964	350	220	200	420	310	31	402	666	373	39	M36	182	FIG2
YZS-40-6	40	3	7.9	967	350	220	200	420	310	31	402	666	373	39	M36	210	FIG2
YZS-50-6B	50	3.7	9.42	965	350	220	200	420	310	31	402	666	373	39	M36	222	FIG2
YZS-60-6	60	3.7	9.42	965	350	220	200	420	310	31	402	666	373	39	M36	235	FIG2
YZS-50-6	50	3.7	9.45	969	380	125	220	450	370	37	435	712	419	39	M36	285	FIG3
YZS-75-6B	75	5.5	13.9	971	380	125	220	450	370	37	435	772	419	39	M36	330	FIG3
YZS-75-6	75	5.5	13.9	985	440	140	240	530	396	40	472	845	453	45	M42	380	FIG3
YZS-100-6	100	7.5	17.8	986	440	140	240	530	396	40	472	845	453	45	M42	425	FIG3
YZS-120-6	120	9.5	19.3	986	440	140	240	530	396	40	472	885	453	45	M42	462	FIG3
YZS-140-6	140	10	20.6	986	440	140	240	530	396	40	472	885	453	45	M42	475	FIG3
YZS-140-6	140	10	20.6	980	480	140	270	610	520	40	545	956	505	45	M42	625	FIG4
YZS-160-6	160	11	23.8	980	480	140	270	610	520	40	545	956	505	45	M42	685	FIG4
YZS-180-6	180	13	27.1	983	520	140	270	610	520	40	545	956	505	45	M42	715	FIG4
YZS-200-6	200	15	30.5	985	600	140	310	700	550	45	610	1030	595	45	M42	860	FIG5
YZS-220-6	220	15	30.5	985	600	140	310	700	550	45	610	1030	595	45	M42	880	FIG5
YZS-240-6	240	18	36.5	985	600	140	310	700	550	45	610	1030	595	45	M42	920	FIG5
YZS-260-6	260	18	36.5	985	600	140	310	700	550	45	610	1050	595	45	M42	950	FIG5
YZS-300-6	300	23	46.3	985	600	140	310	700	550	45	610	1050	595	45	M42	1000	FIG5
YZS-330-6	330	23	46.3	985	600	140	310	700	550	45	610	1100	595	45	M42	1025	FIG5
3 phase 8 pole																	
YZS-20-8	20	1.5	4.88	718	350	220	200	420	310	31	402	666	373	39	M36	205	FIG2
YZS-30-8	30	2.2	3.97	728	380	125	220	450	370	37	435	712	419	39	M36	315	FIG3
YZS-50-8	50	3.7	11.3	734	440	140	240	530	396	40	472	845	453	45	M42	445	FIG3
YZS-75-8	75	5.5	15.1	735	440	140	240	530	396	40	472	845	453	45	M42	485	FIG3
YZS-100-8	100	7.5	17.9	733	480	140	270	610	520	40	545	956	555	45	M42	700	FIG4
YZS-135-8	135	9	21.3	735	480	140	270	610	520	40	545	1016	555	45	M42	740	FIG4
YZS-160-8	160	11	25.8	735	600	140	310	700	550	45	610	1050	595	45	M42	920	FIG5
YZS-180-8	180	13	31.5	735	600	140	310	700	550	45	610	1050	595	45	M42	965	FIG5
YZS-200-8	200	15	33.9	735	600	140	310	700	550	45	610	1100	595	45	M42	990	FIG5

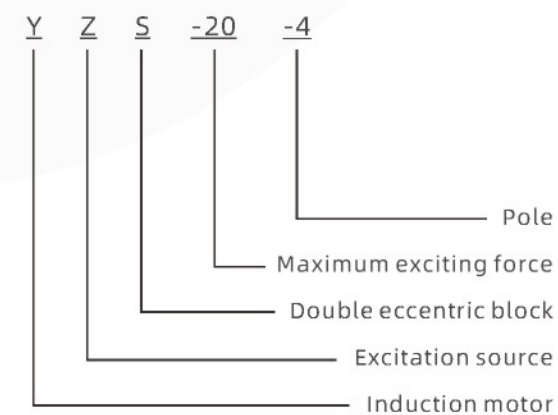
## YZS SERIES THREE-PHASE ASYNCHRONOUS VIBRATION MOTOR (FIRST GENERATION)

YZS series three-phase asynchronous vibration motor is the exciting source of those various vibration machinery. It is widely used for vibration feeding, vibration conveying, vibration beneficiation, vibration screening and the vibration anti-blocking of silos in the industries such as electric power, food, chemical, metallurgy, building materials, coal carbon, mining, light industry, cement, railway, port, and other industries.

Its main feature are: small volume, light weight, high excitement force, stable amplitude, no adjustment of the exciting force, fully sealed casing. Our motors can work in any dusty conditions without the explosion-proof requirements, whose protection level is IP54, and whose insulation level is F. Working condition: the altitude is below 1000 meters, the ambient temperature is -15~40°C, the cooling method is IC410, and the working method is S1 (continuous fixed duty system).



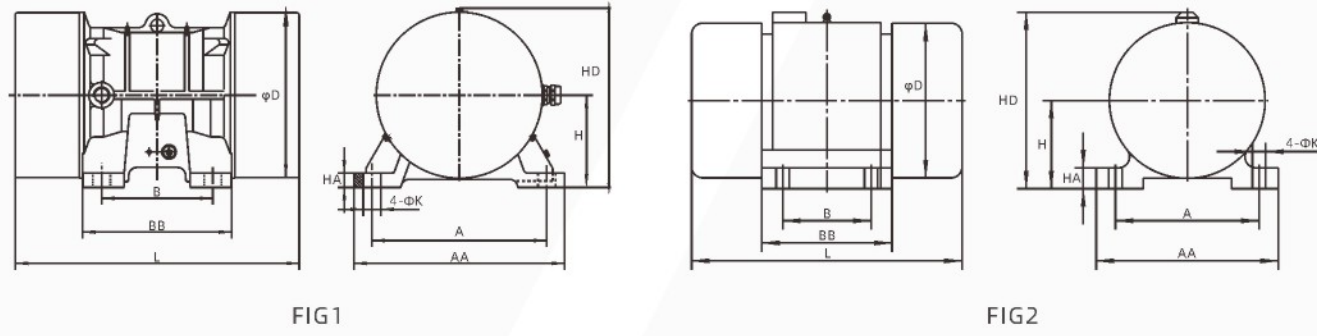
### Model Description



### Working Conditions of the Motor

- The altitude does not exceed 1000 meters.
- The ambient air temperature is -15°C~+40°C.
- The relative humidity of the air is not more than 90%.
- Voltage: 220V/380V.
- Working mode: S1 (continuous).
- Connection method: Δ/Y
- The poles' number of the vibration motor is 2 poles, 4 poles, 6 poles, and 8 poles.

### Appearance



### Main Technical Data

Model	Rated Force (kN)	Rated Power (kW)	Current (A)	Speed (r/min)	Installation Size (mm)									Installed Bolt	Weight (KG)	Figure	
					A	B	H	AA	BB	HA	HD	L	D				K
3 phase 2 pole																	
YZS-1-2	1	0.09	0.45	2800	130	80	80	160	110	13	155	233	132	12	M10	9.5	FIG1
YZS-1.5-2	1.5	0.12	0.52	2768	130	80	80	160	110	13	155	233	132	12	M10	9.5	FIG1
YZS-2-2	2	0.22	0.52	2768	130	80	80	160	110	13	155	233	132	12	M10	10	FIG1
YZS-2.5-2	2.5	0.22	0.52	2768	130	80	80	160	110	13	155	233	132	12	M10	10	FIG1
YZS-3-2	3	0.25	0.71	2875	150	90	90	180	145	14	167	260	141	13	M12	13	FIG1
YZS-5-2	5	0.37	1.15	2874	150	90	90	180	145	14	167	260	141	13	M12	14	FIG1
YZS-8-2	8	0.55	1.3	2762	180	110	110	220	150	16	190	320	166	18	M16	23	FIG1
YZS-10-2	10	0.75	1.8	2878	180	110	110	220	150	16	190	320	166	18	M16	23	FIG1
YZS-15-2	15	1.1	2.59	2888	220	140	120	265	190	18	222	358	210	22	M20	32	FIG1
YZS-20-2	20	1.5	3.21	2900	260	150	140	310	210	22	260	432	250	26	M24	49	FIG1
YZS-25-2	25	2.2	4.95	2925	310	170	170	380	260	55	355	510	310	33	M30	72	FIG2
YZS-30-2	30	2.2	4.95	2925	310	170	170	380	260	55	355	510	310	33	M30	75	FIG2

Model	Rated Force (kN)	Rated Power (kW)	Current (A)	Speed (r/min)	Installation Size (mm)									Installed Bolt	Weight (KG)	Figure	
					A	B	H	AA	BB	HA	HD	L	D				K
3 phase 4 pole																	
YZS-1-4	1	0.09	0.43	1319	130	80	80	160	110	13	155	233	132	12	M10	9.5	FIG1
YZS-1.5-4	1.5	0.12	0.43	1319	130	80	80	160	110	13	155	233	132	12	M10	9.5	FIG1
YZS-2.5-4	2.5	0.18	0.54	1350	150	90	90	180	145	14	167	281	141	13	M12	14	FIG1
YZS-3-4	3	0.18	0.55	1346	150	90	90	180	145	14	167	281	141	13	M12	15	FIG1
YZS-5-4	5	0.25	0.92	1415	180	110	110	220	150	16	190	320	166	18	M16	23	FIG1
YZS-8-4	8	0.37	1.03	1412	220	140	120	265	190	18	222	358	210	22	M20	36	FIG1
YZS-10-4	10	0.55	1.46	1413	220	140	120	265	190	18	222	388	210	22	M20	37	FIG1
YZS-15-4	15	0.75	2.1	1450	260	150	140	310	210	22	260	432	250	26	M24	52	FIG1
YZS-20-4	20	1.1	2.63	1447	260	150	140	310	210	22	260	432	250	26	M24	56	FIG1
YZS-25-4	25	1.5	3.96	1463	310	170	170	380	260	55	355	510	310	33	M30	80	FIG2
YZS-30-4	30	1.5	3.96	1463	310	170	170	380	260	55	355	510	310	33	M30	83	FIG2
3 phase 6 pole																	
YZS-5-6	5	0.37	1.32	936	220	140	120	265	190	18	222	388	210	22	M20	38	FIG1
YZS-8-6	8	0.55	1.8	956	260	150	140	310	210	22	260	432	250	26	M24	58	FIG1
YZS-10-6	10	0.75	2.15	954	260	150	140	310	210	22	260	432	250	26	M24	59	FIG1
YZS-15-6	15	1.1	3.41	976	310	170	170	380	260	55	355	510	310	33	M30	88	FIG2
YZS-20-6	20	1.5	4.18	972	310	170	170	380	260	55	355	510	310	33	M30	91	FIG2
YZS-30-6B	30	2.2	5.72	960	310	170	170	380	260	55	355	510	310	33	M30	94	FIG2

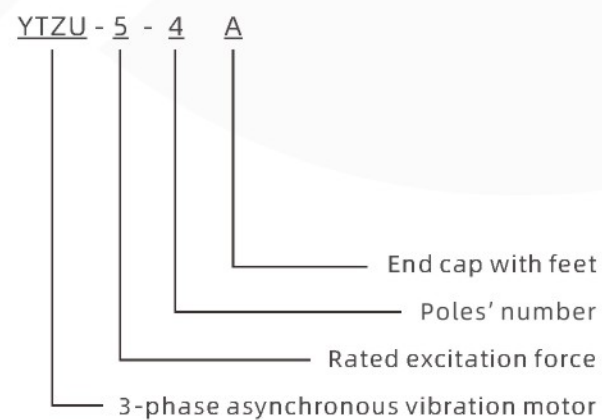
## YTZU-A SERIES THREE-PHASE ASYNCHRONOUS VIBRATION MOTOR

YTZU-A series three-phase asynchronous motors are special motors for the grain machinery industry, with the following characteristics:

1. Reasonable design, excellent material selection, high efficiency, low temperature rising and prolong lifespan.
2. The excitation force and output are well matched, the body is light in weight, the starting torque is large, and the volume is small.
3. The noise is low because of using smooth rotation to generate vibration.
4. Fully enclosed structure, so it can work in any place without the explosion-proof requirements.
5. The exciting force can be adjusted by only adjusting the angle of the eccentric blocks.
6. Multiple units can be combined into various vibration forms to meet various operating requirements.

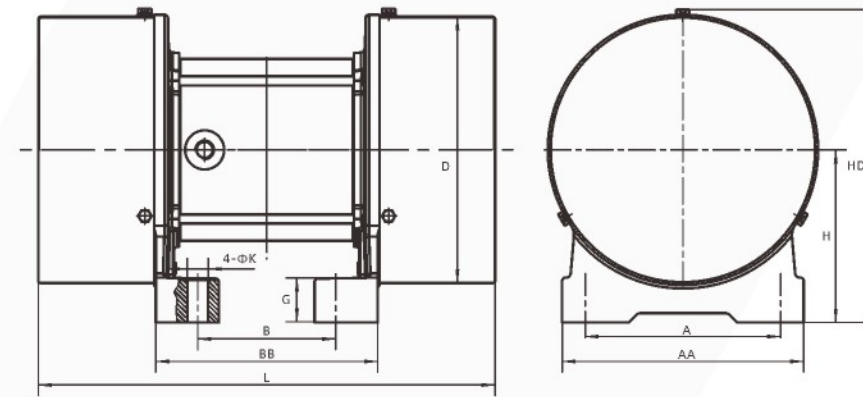


### Model Description



### Working Conditions of the Motor

- Ambient temperature: -20°C ~ +40°C
- Altitude: no more than 1000m
- Voltage: 380v or customized voltage
- Insulation class: F
- Working mode: S1
- Cooling way: IC410
- Installation direction: any direction (except for those with installation instructions)



Model	Pole	Rated Force (kN)	Rated Power (kW)	Current (A)	A	B	N-K	AA	BB	H	G	HD	L	D	Weight (KG)
3 phase 2 pole															
YTZU-6-2A	2	6	0.4	0.9	170	120	4-18	210	195	130	35	241	360	208	27
3 phase 4 pole															
YTZU-3-4A	4	3	0.12	0.4	150	90	4-12	184	156	116	22	220	281	191	21
YTZU-5-4A	4	5	0.25	0.78	170	120	4-18	210	195	130	35	241	360	208	29
YTZU-6-4A	4	6	0.37	0.86	170	120	4-18	210	195	130	35	241	360	208	30
YTZU-8-4A	4	8	0.37	0.86	170	120	4-18	210	195	130	35	241	400	208	38
YTZU-10-4A	4	10	0.55	1.35	170	120	4-18	210	195	130	35	241	400	208	39
YTZU-12-4A	4	12	0.75	1.68	170	120	4-18	210	193	150	38	273	398	233	43
YTZU-15-4A	4	15	0.75	1.68	170	120	4-18	210	193	150	38	273	398	233	45
3 phase 6 pole															
YTZU-1-6A	6	1	0.2	0.6	150	120	4-14	184	176	116	22	220	341	191	23
YTZU-2-6A	6	2	0.2	0.6	150	120	4-14	184	176	116	22	220	341	191	22
YTZU-3-6A	6	3	0.25	0.76	150	120	4-16	184	176	116	22	220	371	191	27
YTZU-4-6A	6	4	0.25	0.76	170	120	4-18	210	195	130	35	241	400	208	35
YTZU-5-6A	6	5	0.37	1.07	170	120	4-18	210	195	130	35	241	400	208	38
YTZU-6-6A	6	6	0.3	0.9	170	120	4-18	210	193	150	38	273	398	233	45
YTZU-7.5-6A	6	7.5	0.3	0.9	170	120	4-18	210	193	150	38	273	398	233	46
YTZU-8-6A	6	8	0.55	1.5	170	120	4-18	210	193	150	38	273	398	233	46
YTZU-9-6A	6	9	0.3	0.9	170	120	4-18	210	193	150	38	273	398	233	49
YTZU-10-6A	6	10	0.75	1.9	190	150	4-23	238	226	163	42	300	432	300	58
YTZU-12-6A	6	12	0.75	1.9	190	150	4-23	238	226	163	42	300	432	300	60
YTZU-15-6A	6	15	0.75	1.9	190	150	4-23	238	226	163	42	300	472	300	66
YTZU-17-6A	6	17	0.75	1.9	190	150	4-23	238	226	163	42	300	472	300	68
3 phase 8 pole															
YTZU-14-8A	8	14	0.65	1.8	190	150	4-23	238	226	163	42	350	502	300	69

Notes: HD size will have a difference if the customers require a junction box on top.

## MVG(E)EUROPEAN STANDARD SERIES THREE PHASE ASYNCHRONOUS VIBRATION MOTOR

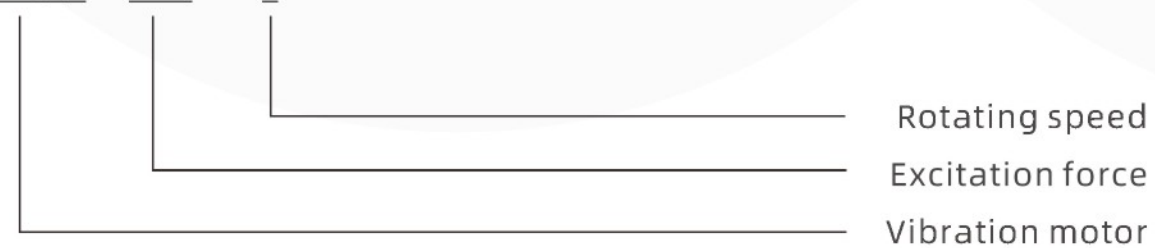
MVG(E) series three-phase asynchronous vibration motor is a European standard product, which is made of high-strength zinc-aluminum alloy as raw material and processed by high-precision aluminum die-casting process, so the body weight can be greatly reduced while enhancing the processing ability of the motors. This series has the features such as higher protection level, small volume and prolong lifespan.

Its protection level is IP55 while IP65 can be made according to the requirements. The integral sealing structure can have the merits of oil resistance, shock resistance and the oxidation resistance. The bearings are taking the imported brands, which have been tested for thousands of times, high temperature resistance and precision noise reduction are its main features. The stepless adjustment of the exciting force can help to meet the needs of various equipment and works.

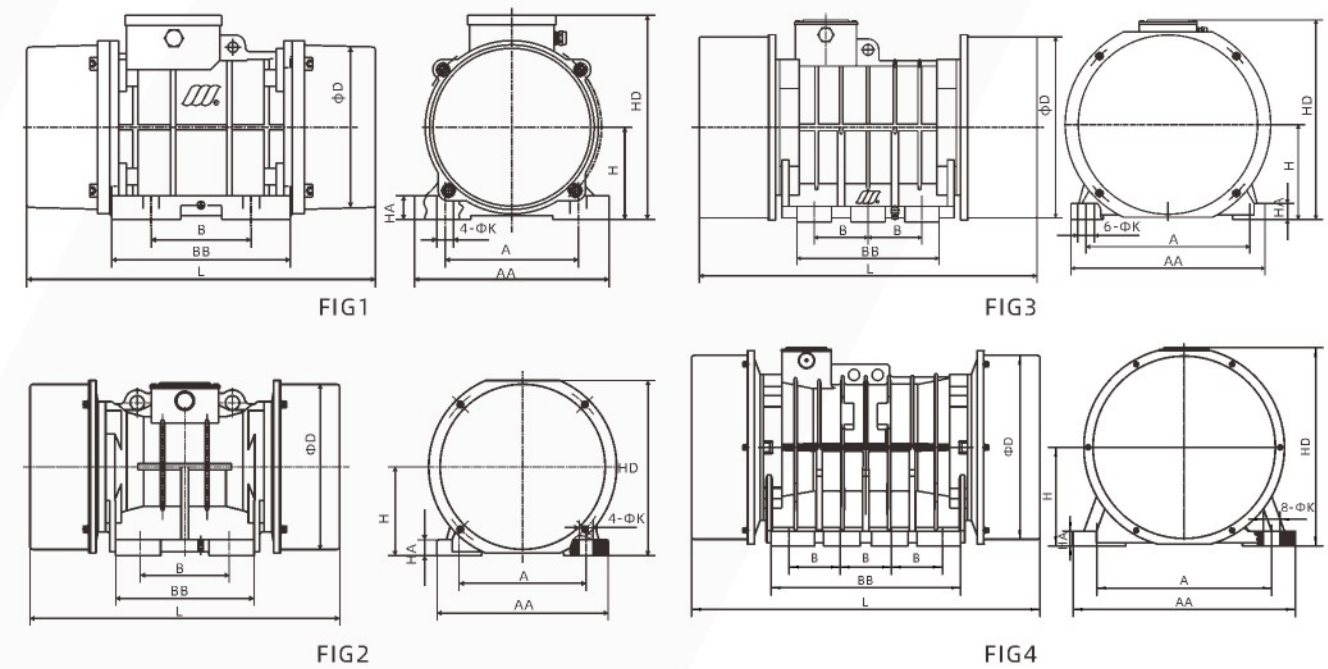


### Model Description

MVG(E) - 200 / 3



### Appearance



Model	Rated Force (kN)	Rated Power (kw)	Current (A)	Installation Size (mm)									Installed Bolt	Weight (KG)	Figure	
				A	B	H	AA	BB	HA	HD	L	D				K
3 phase 2 pole																
60/3	0.6	0.04	0.25	106	62-74	61	130	123	10	153	211	110	9	M8	6	FIG1
100/3	1	0.04	0.25	106	62-74	61	130	123	10	153	211	110	9	M8	6	FIG1
200/3	2	0.09	0.35	106	62-74	61	130	123	10	153	211	110	9	M8	7	FIG1
300/3	3	0.16	0.52	125	90	80	155	160	15	183	303	135	12	M10	10	FIG1
400/3	4	0.2	0.58	125	90	80	155	160	15	183	303	135	12	M10	11	FIG1
500/3	5	0.37	0.96	140	105	90	190	177	23	190	340	160	13	M12	16	FIG1
700/3	7	0.45	1.25	140	105	90	190	177	23	190	340	160	13	M12	17	FIG1
800/3	8	0.55	1.45	170	120	120	210	180	20	240	409	220	17	M16	39	FIG1
1200/3	12	0.75	1.85	170	120	120	210	180	20	240	409	220	17	M16	41	FIG1
1300/3	13	1.1	2.44	170	120	120	210	180	20	240	409	220	17	M16	42	FIG1
1600/3	16	1.25	2.94	190	140	140	270	218	25	280	436	260	17	M16	54	FIG1
2000/3	20	2	3.75	190	140	140	270	218	25	280	436	260	17	M16	56	FIG1
2300/3	23	2	4.44	190	140	140	270	218	25	280	436	260	17	M16	61	FIG1
3200/3	32	2.2	5.3	225	155	165	290	232	30	325	542	310	25	M24	88	FIG2
3200/3	32	2.2	5.3	255	155	190	350	250	32	375	574	354	25	M24	104	FIG2
4000/3	40	2.3	5.3	255	155	190	350	250	32	375	574	354	25	M24	107	FIG2
5000/3	50	3.5	7.22	255	155	190	350	250	32	375	574	354	25	M24	112	FIG2

Model	Rated Force (kN)	Rated Power (kW)	Current (A)	Installation Size (mm)										Installed Bolt	Weight (KG)	Figure
				A	B	H	AA	BB	HA	HD	L	D	K			
3 phase 4 pole																
40/15	0.4	0.03	0.31	106	62-74	61	130	123	10	153	211	110	9	M8	6	FIG1
90/15	0.9	0.04	0.31	106	62-74	61	130	123	10	153	211	110	9	M8	7	FIG1
200/15	2	0.06	0.49	125	90	80	155	160	15	183	303	135	12	M10	12	FIG1
250/15	2.5	0.07	0.54	125	90	80	155	160	15	183	303	135	12	M10	14	FIG1
300/15	3	0.08	0.62	125	90	80	155	160	15	183	303	135	12	M10	17	FIG1
400/15	4	0.15	0.84	140	105	90	190	177	23	190	340	160	13	M12	20	FIG1
500/15	5	0.25	1.06	140	105	90	190	177	23	190	340	160	13	M12	21	FIG1
700/15	7	0.37	1.32	170	120	120	210	180	20	240	409	220	17	M16	40	FIG1
800/15	8	0.4	1.36	170	120	120	210	180	20	240	409	220	17	M16	41	FIG2
1100/15	11	0.4	1.4	170	120	120	210	180	20	240	409	220	17	M16	43	FIG2
1400/15	14	0.45	1.78	190	140	140	270	218	25	280	436	260	17	M16	63	FIG2
1700/15	17	0.75	2.16	190	140	140	270	218	25	280	436	260	17	M16	69	FIG2
2400/15	24	1	3.2	190	140	140	270	218	25	280	436	260	17	M16	75	FIG2
2500/15	25	1.2	3.08	225	155	165	290	232	30	325	542	310	22	M20	91	FIG2
3000/15	30	1.5	3.68	225	155	165	290	232	30	325	542	310	22	M20	94	FIG2
3800/15	38	1.72	4.15	255	155	190	350	250	32	375	574	354	23.5	M22	137	FIG2
4300/15	43	1.94	4.5	255	155	190	350	250	32	375	574	354	23.5	M22	141	FIG2
5500/15	55	2.2	6.5	280	180	190	350	250	32	375	614	354	26	M24	150	FIG2
7200/15	72	3	8.5	320	200	200	420	310	31	402	666	373	28	M26	195	FIG2
9000/15	90	5.8	13.6	320	200	200	420	310	31	402	666	373	28	M26	225	FIG2
10000/15	100	6.3	14.3	380	125	220	420	370	37	435	712	419	39	M36	375	FIG3
11500/15	115	8.4	15.6	440	140	240	530	396	40	472	845	453	45	M42	390	FIG3
14500/15	145	8.9	18.5	440	140	240	530	396	40	472	845	453	45	M42	420	FIG3

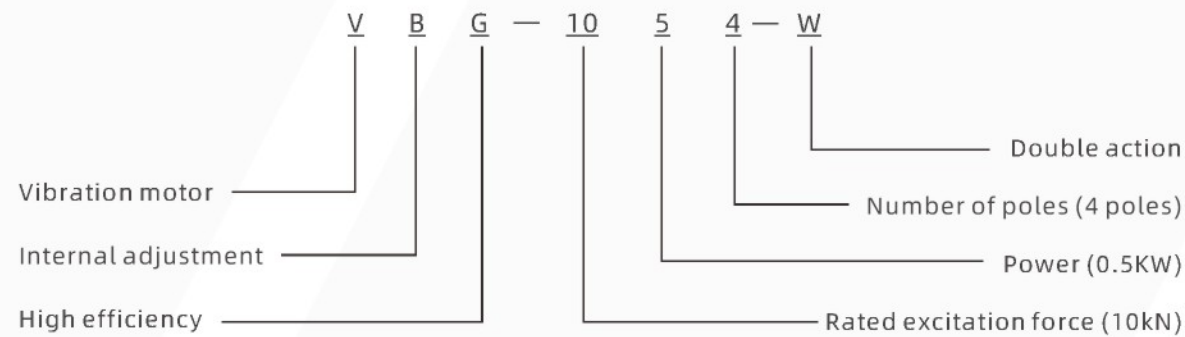
Model	Rated Force (kN)	Rated Power (kW)	Current (A)	Installation Size (mm)										Installed Bolt	Weight (KG)	Figure
				A	B	H	AA	BB	HA	HD	L	D	K			
3 phase 6 pole																
200/1	2	0.05	0.65	140	105	90	190	177	23	190	340	160	13	M12	20	FIG1
300/1	3	0.16	0.67	170	120	120	210	180	20	240	409	220	17	M16	43	FIG2
400/1	4	0.25	1.22	170	120	120	210	180	20	240	409	220	17	M16	45	FIG2
500/1	5	0.37	1.22	170	120	120	210	180	20	240	449	220	17	M16	49	FIG2
800/1	8	0.45	1.42	190	140	140	270	218	25	280	436	260	17	M16	65	FIG2
1100/1	11	0.55	1.42	190	140	140	270	218	25	280	436	260	17	M16	70	FIG2
1400/1	14	0.70	1.95	190	140	140	270	218	25	280	486	260	17	M16	74	FIG2
1600/1	16	0.75	2.06	190	140	140	270	218	25	280	486	260	17	M16	77	FIG2
1620/1	16.2	0.75	2.4	225	155	165	290	232	30	325	542	310	22	M20	95	FIG2
2100/1	21	1.1	3.00	225	155	165	290	232	30	325	542	310	22	M20	102	FIG2
2600/1	26	1.5	4.1	255	155	190	350	250	32	375	574	354	23.5	M22	149	FIG2
3000/1	30	1.7	4.5	255	155	190	350	250	32	375	574	354	23.5	M22	156	FIG2
3800/1	38	2	5.5	280	180	190	350	250	32	375	614	354	26	M24	168	FIG2
4700/1	47	2.35	6.5	280	180	190	350	250	32	375	614	354	26	M24	180	FIG2
5200/1	52	2.6	6.92	320	200	200	420	310	31	402	666	373	28	M26	221	FIG2
6500/1	65	2.9	7.76	320	200	200	420	310	31	402	666	373	28	M26	255	FIG2
8000/1	80	4.5	12.6	320	200	200	420	310	31	402	720	373	28	M26	305	FIG2
9000/1	90	5	13.2	320	200	200	420	310	31	402	750	373	28	M26	305	FIG2
10000/1	100	6	14	380	125	220	450	370	37	435	820	419	39	M36	462	FIG3
13000/1	130	7	16.4	380	125	220	450	370	37	435	860	419	39	M36	475	FIG3
15000/1	150	9	21.7	480	140	270	610	520	40	545	956	505	45	M42	685	FIG4
18000/1	180	11	23.8	480	140	270	610	520	40	545	956	505	45	M42	715	FIG4
19500/1	195	12	27.1	480	140	270	610	520	40	545	1000	505	45	M42	750	FIG4
22000/1	220	15	30.5	520	140	310	640	550	45	610	1030	595	45	M42	880	FIG4
25000/1	250	16	36.5	520	140	310	640	550	45	610	1050	595	45	M42	950	FIG4
30000/1	300	23	46.3	600	140	310	700	550	45	610	1050	595	45	M42	1000	FIG4

## VBG SERIES THREE PHASE ASYNCHRONOUS VIBRATION MOTOR

VBG series three-phase asynchronous vibrating motor is used as the excitation source of various vibrating machinery, such as vibrating feeder, vibrating conveyor, vibrating beneficiation, vibrating shakeout machine, vibrating screening machine, vibration anti-blocking device for silo, etc. This serie motor is widely used in electric power, building materials, coal, mining, metallurgy, chemical industry, light industry, casting and other industries.



### Model Description



### Appearance

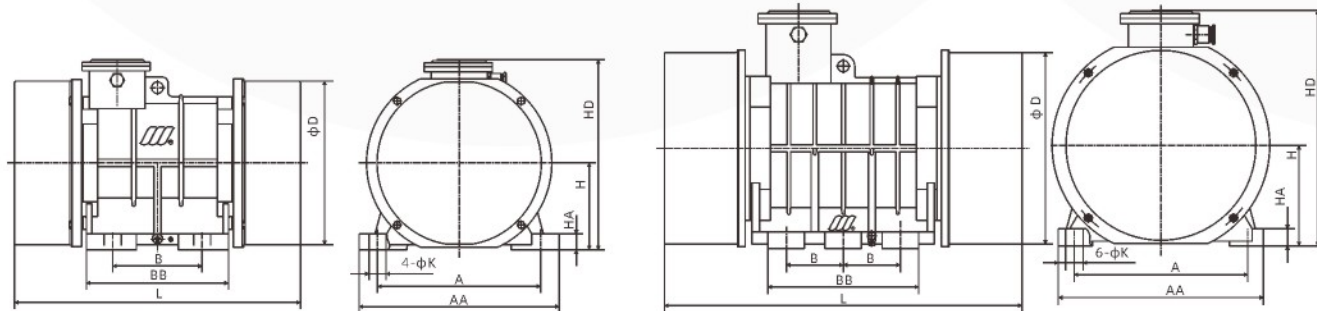


FIG1

FIG2

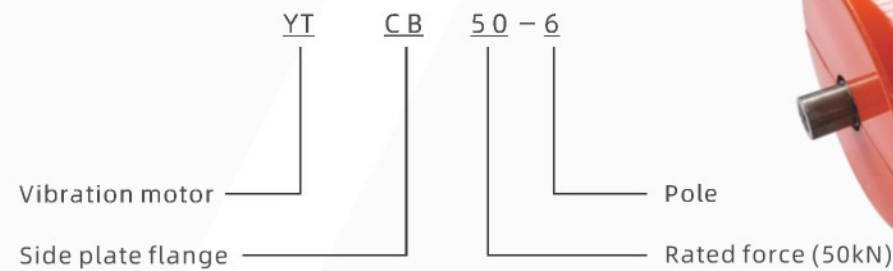
### Main Technical Data

Model	Rated Force (kN)	Rated Power (kW)	Current (A)	Installation Size (mm)									Installed Bolt	Weight (KG)	Figure	
				A	B	H	AA	BB	HA	HD	L	D				K
3 phase 2 pole																
VBG-542-W	5	0.37	1.15	170	120	110	210	166	18	245	390	178	18	M16	30	FIG1
VBG-1082-W	10	0.75	1.8	200	140	120	260	190	20	287	444	220	22	M20	44	FIG1
VBG-20152-W	20	1.5	3.41	260	200	140	310	230	25	341	543	259	26	M24	65	FIG1
VBG-40372-W	40	3.7	7.87	350	220	200	420	310	31	402	666	373	38	M36	155	FIG1
3 phase 4 pole																
VBG-534-W	5	0.25	0.73	180	110	110	210	166	18	245	390	178	14	M12	33	FIG1
VBG-634-W	6	0.3	1.03	200	110	120	260	190	20	287	444	220	18	M16	37	FIG1
VBG-1064-W	10	0.55	1.5	220	110	120	260	190	20	287	444	220	22	M20	40	FIG1
VBG-1284-W	12	0.75	3.1	220	145	120	260	190	20	287	444	220	22	M20	53	FIG1
VBG-1584-W	15	0.75	2.1	220	145	120	260	190	20	287	444	220	22	M20	57	FIG1
VBG-1584-W	15	0.75	2.1	220	145	140	290	230	25	341	543	259	22	M20	70	FIG1
VBG-20114-W	20	1.1	2.97	220	160	140	290	230	25	341	543	259	26	M24	75	FIG1
VBG-32154-W	31.5	1.5	3.96	260	180	165	330	280	30	372	553	310	26	M24	104	FIG1
VBG-50224-W	50	2.2	5.47	350	220	200	420	310	31	402	666	373	38	M36	175	FIG1
VBG-75374-W	75	3.7	9.46	380	125	220	450	330	37	435	712	419	38	M36	292	FIG2
VBG-84554-W	84	5.5	11.9	380	125	220	450	330	37	435	712	419	38	M36	305	FIG2
VBG-100634-W	100	6.3	14.4	440	140	240	530	396	38	472	865	453	45	M42	375	FIG2
VBG-145894-W	145	8.9	17.59	440	140	240	530	396	38	472	865	453	45	M42	395	FIG2
3 phase 6 pole																
VBG-546-W	5	0.37	1.32	200	110	120	260	190	20	287	484	220	22	M20	49	FIG1
VBG-1086-W	10	0.75	2.42	220	160	140	310	230	25	341	543	259	26	M24	75	FIG1
VBG-15116-W	15	1.1	3.41	220	160	140	310	230	25	341	543	259	26	M24	85	FIG1
VBG-20156-W	20	1.5	4.18	260	180	165	380	280	30	372	553	310	26	M24	120	FIG1
VBG-32226-W	31.5	2.2	5.72	350	220	200	420	310	31	402	666	373	38	M36	183	FIG1
VBG-40306-W	40	3	7.9	350	220	200	420	310	31	402	666	373	38	M36	210	FIG1
VBG-50376-W	50	3.7	9.42	350	250	200	420	310	31	402	666	373	38	M36	221	FIG1
VBG-60376-W	60	3.7	9.45	350	220	200	420	310	31	402	666	373	38	M36	238	FIG1
VBG-75556-W	75	5.5	13.2	380	125	220	450	330	37	435	712	419	38	M36	330	FIG2
VBG-100756-W	100	7.5	17.8	440	140	240	530	396	38	472	865	453	45	M42	410	FIG2

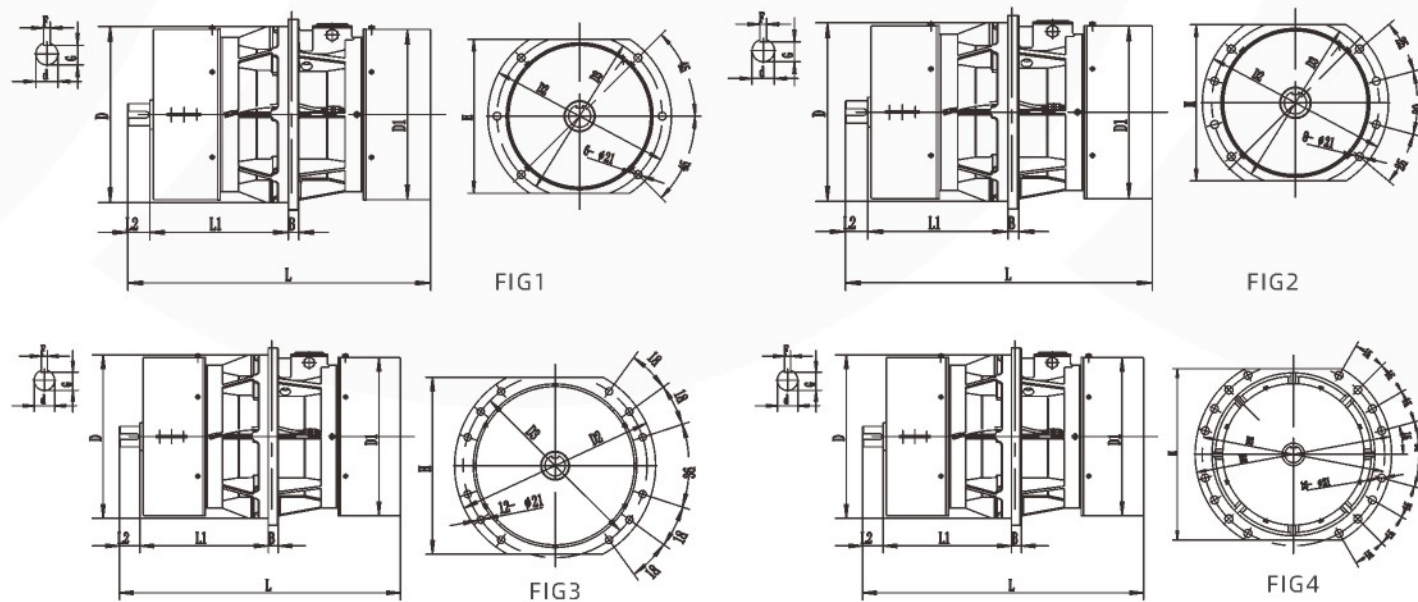
## YTCB SIDE PLATE VIBRATION MOTOR

The side plate type three-phase asynchronous vibration motor saves the complicated bottom plate structure of the ordinary vibration motors. The motor is directly installed on the side plate of the machine, which can make the vibration machine realize circular motion or linear motion, while reducing the weight of the vibration machine. It has the following features such as rigidity requirement of the body machine, low power consumption, easy installation and maintenance, stronger excitation force of the single machine, long lifespan, which is widely applied in electric power, building materials, coal, chemical industry, mining, metallurgy, light industry, casting and other industries. It is mainly suitable for large-scale screening equipment.

### Model Description



### Appearance



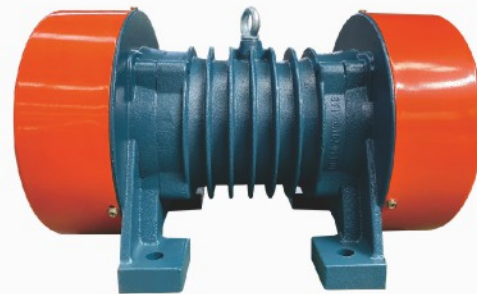
### Main Technical Data

Model	Rated Force (kN)	Rated Speed (r/min)	Rated Power (kW)	Installation Size (mm)				Outline Size (mm)						G	F	K	Weight (KG)	Figure	
				D	D1	D2	D3	L	L1	L2	L3	H	B						d
<b>3 phase 4 pole</b>																			
YTCB25-4	25	1475	1.25	280	274	370	330	562	269	50	40	310	20	45	41	8	6-φ21	94	FIG1
YTCB35-4	35	1475	1.8	315	304	405	365	575	276	50	40	335	20	45	41	8	6-φ21	123	FIG1
YTCB50-4	50	1475	2.2	365	354	455	415	573	276	60	50	385	20	50	45	12	6-φ21	178	FIG1
YTCB60-4E	60	1475	3.0	365	354	455	415	593	286	60	50	385	20	50	45	12	6-φ21	187	FIG1
YTCB60-4	60	1475	3.0	400	390	500	450	710	315	60	50	420	25	60	53	18	8-φ21	220	FIG2
YTCB75-4	75	1475	3.7	400	390	500	450	710	315	60	50	420	25	60	53	18	8-φ21	260	FIG2
YTCB100-4E	100	1475	5.5	400	390	500	450	710	315	60	50	420	25	60	53	18	8-φ21	280	FIG2
YTCB100-4	100	1475	6.3	430	428	530	480	706	342	60	50	450	35	60	53	18	8-φ21	320	FIG2
YTCB120-4E	120	1475	7.5	430	428	530	480	726	352	60	50	450	35	60	53	18	8-φ21	350	FIG2
YTCB120-4	120	1475	7.5	480	464	600	540	785	357	60	50	500	27	60	53	18	12-φ21	420	FIG3
<b>3 phase 6 pole</b>																			
YTCB15-6	15	980	1.1	280	274	370	330	566	274	50	40	310	20	36	32	8	6-φ21	100	FIG1
YTCB25-6	25	980	1.8	315	309	405	365	608	293	50	40	335	20	45	41	8	6-φ21	130	FIG1
YTCB35-6	35	980	2.4	365	354	455	415	592	285	60	50	385	20	50	45	12	6-φ21	188	FIG1
YTCB40-6	40	980	3.0	365	354	455	415	592	285	60	50	385	20	50	45	12	6-φ21	220	FIG1
YTCB50-6E	50	980	3.7	365	354	455	415	642	305	60	50	385	20	50	45	12	6-φ21	240	FIG1
YTCB50-6	50	980	3.7	400	390	500	450	710	315	60	50	420	25	60	53	18	8-φ21	280	FIG2
YTCB75-6E	75	980	5.5	400	390	500	450	757	340	60	50	420	25	60	53	18	8-φ21	310	FIG2
YTCB75-6	75	980	6.0	430	420	530	480	710	440	60	50	450	30	60	53	18	8-φ21	350	FIG2
YTCB100-6	100	980	7.5	480	464	600	540	785	357	60	50	500	27	60	53	18	12-φ21	450	FIG3
YTCB120-6E	120	980	9	480	464	600	540	825	357	60	50	500	27	60	53	18	12-φ21	480	FIG3
YTCB120-6	120	980	9	580	504	700	650	808	376	60	50	610	30	60	53	18	16-φ21	510	FIG4
YTCB140-6	140	980	10	580	504	700	650	808	378	60	50	610	30	60	53	18	16-φ21	620	FIG4
YTCB160-6	160	980	11	580	504	700	650	836	389	60	50	610	30	60	53	18	16-φ21	670	FIG4
YTCB180-6	180	980	13	580	504	700	650	870	402	60	50	610	30	60	53	18	16-φ21	710	FIG4
<b>3 phase 8 pole</b>																			
YTCB50-8	50	740	3.7	400	390	500	450	757	340	60	50	440	25	60	53	18	8-φ21	310	FIG2
YTCB75-8	75	740	6.0	430	420	530	480	858	415	60	50	480	35	60	53	18	8-φ21	420	FIG2
YTCB100-8	100	740	7.5	480	464	600	540	905	496	60	50	500	27	60	53	18	12-φ21	580	FIG3
YTCB140-8	140	740	9	580	576	700	650	916	430	60	50	610	27	60	53	18	16-φ21	750	FIG4
YTCB160-8	160	740	11	580	576	700	650	956	450	60	50	610	35	60	53	18	16-φ21	810	FIG4
YTCB180-8	180	740	13	580	576	700	650	976	470	60	50	610	35	60	53	18	16-φ21	850	FIG4

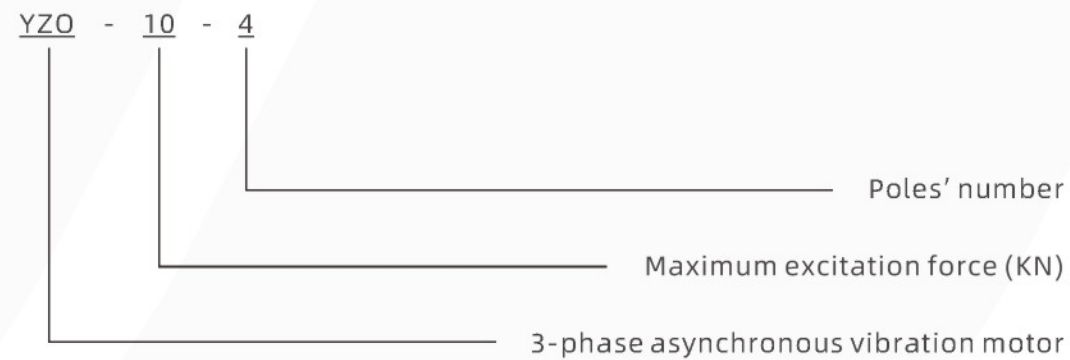
## YZO SERIES THREE PHASE ASYNCHRONOUS VIBRATION MOTOR

YZO series three-phase asynchronous vibration motor is the excitation source of various vibration machines, it is widely used for the vibration feeding, vibration conveying, vibrating beneficiation, vibrating sand falling, vibrating screening and vibration anti-blocking of silos, etc. in the fields such as electric power, food, chemical industry, metallurgy, building materials, coal, mine, light industry, cement, railway, port and so on.

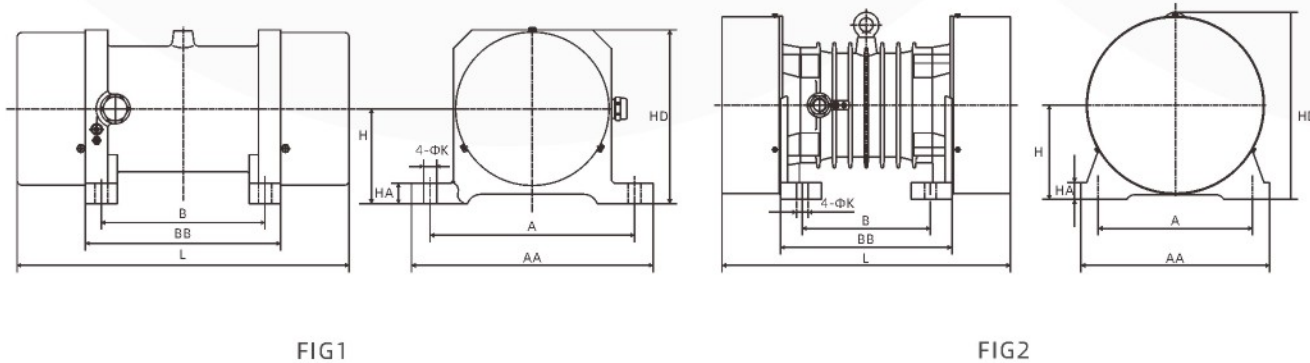
Its main features are small size, light weight, large excitation force, stable amplitude, stepless adjustment of the excitation force, fully sealed casing, and this series motor can be used in any environment without explosion-proof requirements. Its protection level is IP55 while its insulation level is F. Working conditions: the altitude is below 1000 meters, the ambient temperature is -15~40°C, and the cooling method is IC410. The working mode is S1 (continuous fixed duty system).



### Model Description



### Appearance



### Main Technical Data

Model	Rated Force (kN)	Rated Power (kW)	Current (A)	Installation Size (mm)									Weight (KG)	Figure
				A	B	H	HA	ΦK	AA	BB	HD	L		
3 phase 2 pole														
YZO-1.5-2	1.5	0.15	0.38	180	124	90	20	10	214	178	165	265	15	FIG1
YZO-2.5-2	2.5	0.25	0.58	180	150	90	20	12	214	178	165	295	16	FIG1
YZO-5-2	5	0.4	1.15	220	176	102	22	14	260	210	190	240	22	FIG1
YZO-8-2	8	0.75	1.84	236	180	140	23	18	290	245	270	395	43	FIG2
YZO-10-2	10	0.75	1.88	236	180	140	23	18	290	245	270	395	45	FIG2
YZO-16-2	16	1.5	3.84	236	200	140	23	18	290	245	270	415	49	FIG2
3 phase 4 pole														
YZO-2.5-4	2.5	0.25	0.92	180	150	90	20	12	214	178	165	325	16	FIG1
YZO-5-4	5	0.4	1.15	220	176	102	22	14	260	210	190	360	28	FIG1
YZO-8-4	8	0.75	2.1	236	180	140	23	18	290	245	270	395	47	FIG2
YZO-10-4	10	1	2.3	236	180	140	23	18	290	245	270	395	49	FIG2
YZO-17-4	17	0.75	1.8	260	150	140	50	28	310	230	293	522	53	FIG1
YZO-20-4	20	2	4.1	270	224	165	30	20	330	298	330	505	78	FIG2
YZO-30-4	30	2.5	5.75	326	184	195	35	30	400	300	390	535	122	FIG2
YZO-50-4	50	3.7	7.4	326	184	195	35	30	400	300	390	535	143	FIG2
3 phase 6 pole														
YZO-5-6	5	0.4	1.15	220	176	120	22	14	280	230	265	390	36	FIG1
YZO-8-6	8	0.75	1.84	236	180	140	23	18	290	245	270	460	56	FIG2
YZO-10-6	10	0.75	2.3	236	180	140	23	18	290	245	270	460	58	FIG2
YZO-12-6	12	1	2.5	260	150	140	30	28	310	230	293	522	57	FIG1
YZO-18-6	18	1.1	3.8	270	224	165	30	20	330	298	330	505	91	FIG2
YZO-20-6	20	2	4.1	270	224	165	30	20	330	298	330	505	93	FIG2
YZO-30-6	30	2.5	5.75	326	184	195	35	30	400	300	390	535	145	FIG2
YZO-40-6	40	3	7.9	326	184	195	35	30	400	300	390	575	155	FIG2
YZO-50-6	50	3.7	9.42	326	184	195	35	30	400	300	390	575	165	FIG2

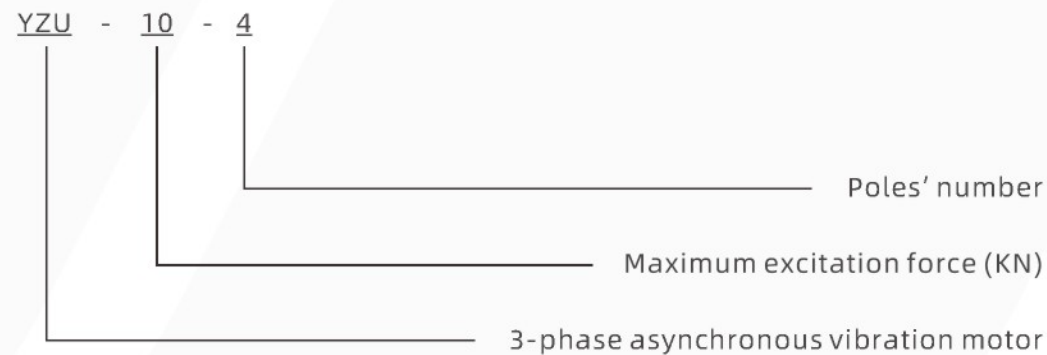
# YZU SERIES THREE PHASE ASYNCHRONOUS VIBRATION MOTOR

YZU series three-phase asynchronous vibrating motor is the excitation source of various vibrating machinery, and it is widely used for vibrating feeding, vibrating conveying, vibrating beneficiation, vibrating sand falling, vibrating screening and the vibration anti-blocking of the silos, etc.

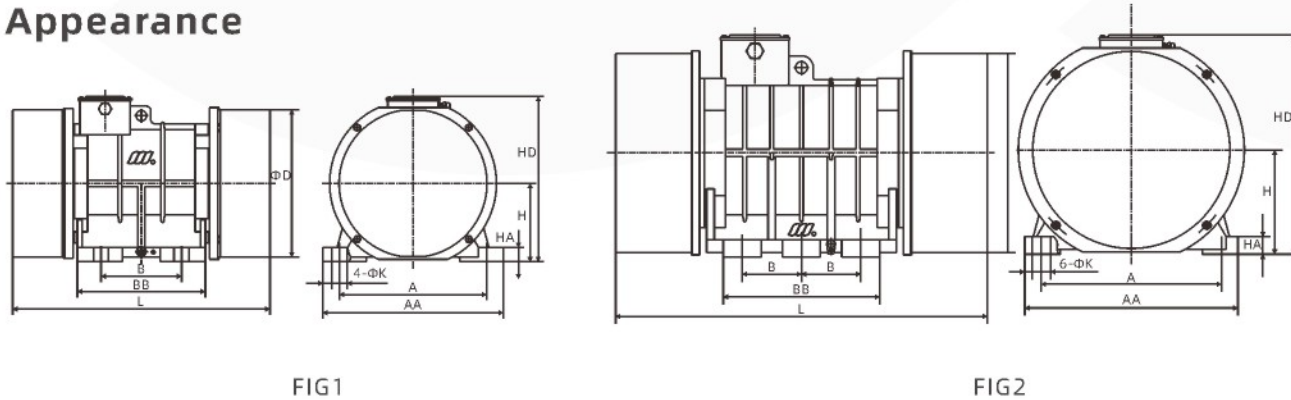
in the fields such as electricity, grain, chemical industry, metallurgy, building materials, coal, mining, light industry, cement, railway, port and so on. Its main features are small size, light weight, large excitation force, stable amplitude, stepless adjustment of excitation force, fully sealed casing, and this series motor can be used in any environment without explosion-proof requirements. Its protection level is IP55 while the insulation level is F. Working conditions: the altitude is below 1000 meters, the ambient temperature is -15~40°C, and the cooling method is IC410. Its working mode is S1 (continuous quota system).



## Model Description



## Appearance



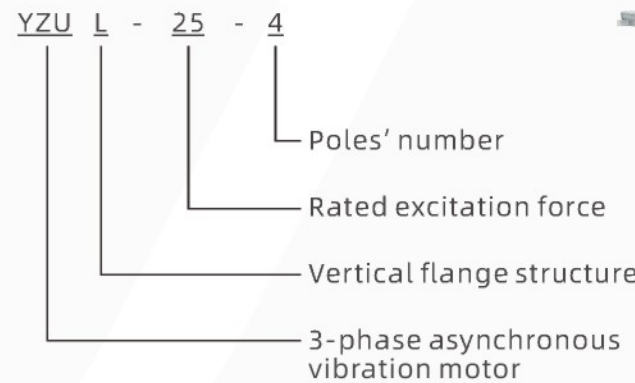
## Main Technical Data (B3 Horizontal)

Model	Rated Force (kN)	Rated Power (kW)	Current (A)	Installation Size (mm)										Figure
				A	B	N-ΦK	AA	BB	H	G	HD	L	D	
3 phase 2 pole														
YZU-0.6-2B	0.6	0.06	0.2	106	62	4-9	130	123	61	10	153	211	110	FIG1
YZU-2-2B1	2	0.12	0.35	106	62	4-9	130	123	61	10	153	211	110	FIG1
YZU-3-2B	3	0.2	0.5	150	90	4-14	180	124	90	14	167	265	141	FIG1
YZU-4-2B	4	0.25	0.65	140	90	4-18	180	124	90	14	167	265	141	FIG1
YZU-6-2B	6	0.4	0.9	150	120	4-18	218	166	110	18	240	390	195	FIG1
YZU-8-2B	8	0.55	1.2	170	120	4-18	210	180	120	20	240	409	220	FIG1
YZU-10-2B	10	0.75	1.6	170	120	4-18	210	180	120	20	240	409	220	FIG1
YZU-16-2B	16	1.2	2.5	190	180	4-22	270	218	140	25	300	488	260	FIG1
YZU-20-2B	20	1.5	3.25	205	130	4-26	270	218	140	25	300	538	260	FIG1
YZU-30-2B	30	2.2	4.33	260	150	4-32	320	232	165	30	325	542	310	FIG1
YZU-40-2B	40	3	5.8	320	190	4-32	380	250	190	32	375	574	354	FIG1
YZU-50-2B	50	3.7	7.35	320	190	4-32	380	250	190	32	375	574	354	FIG1
3 phase 4 pole														
YZU-2-4B	2	0.12	0.37	150	90	4-14	180	124	90	14	167	281	141	FIG1
YZU-3-4B	3	0.12	0.4	150	90	4-12	180	124	90	14	167	281	141	FIG1
YZU-5-4B	5	0.25	0.78	140	105	4-14	190	177	90	23	190	340	160	FIG1
YZU-8-4B	8	0.37	0.86	170	120	4-18	210	180	120	20	240	409	220	FIG1
YZU-10-4B	10	0.55	1.46	170	120	4-18	210	180	120	20	240	409	220	FIG1
YZU-15-4B	15	0.75	1.68	170	120	4-18	210	180	120	20	240	449	220	FIG1
YZU-20-4B	20	1.1	2.38	205	130	4-26	270	218	140	25	300	538	260	FIG1
YZU-25-4B	25	1.5	3.2	205	130	4-26	270	218	140	25	300	538	260	FIG1
YZU-32-4B	32	1.5	3.2	205	130	4-26	270	218	140	25	300	538	260	FIG1
YZU-35-4B	35	1.5	3.2	205	130	4-26	270	218	140	25	300	538	260	FIG1
YZU-50-4B	50	2.2	4.7	320	150	4-32	380	250	190	32	375	574	354	FIG1
YZU-75-4B	75	3.7	7.64	320	120	6-32	420	310	200	31	402	666	373	FIG2
YZU-85-4B	85	5.5	11	380	125	6-38	450	330	220	37	435	712	419	FIG2
YZU-100-4B	100	6.3	12.9	440	140	6-45	530	396	240	35	472	845	453	FIG2
YZU-145-4B	145	8.9	17.6	440	140	6-45	530	396	240	35	472	845	453	FIG2
3 phase 6 pole														
YZU-3-6B	3	0.25	0.76	150	120	4-16	218	166	110	18	240	410	195	FIG1
YZU-5-6B	5	0.37	1.05	170	120	4-18	210	180	120	20	240	449	220	FIG1
YZU-8-6B	8	0.55	1.5	170	120	4-18	210	180	120	20	240	449	220	FIG1
YZU-10-6B	10	0.75	1.92	190	150	4-22	270	218	140	25	300	436	260	FIG1
YZU-15-6B	15	1.1	2.9	205	130	4-26	270	218	140	25	300	538	260	FIG1
YZU-20-6B	20	1.5	3.7	260	150	4-32	320	232	165	30	325	542	310	FIG1
YZU-25-6B	25	1.5	3.7	260	150	4-32	320	232	165	30	325	582	310	FIG1
YZU-30-6B	30	2.2	5.04	320	150	4-32	380	250	190	32	375	574	354	FIG1
YZU-32-6B	32	2.4	5.66	350	220	4-38	420	310	200	31	402	666	373	FIG1
YZU-36-6B	36	2.2	5.04	320	150	4-32	380	250	190	32	375	614	354	FIG1
YZU-40-6B	40	3	6.73	320	150	4-32	380	250	190	32	375	614	354	FIG1
YZU-50-6B	50	3.7	8.3	320	165	4-32	380	250	190	32	375	614	354	FIG1
YZU-60-6B	60	3.7	8.33	350	220	4-38	420	310	200	31	402	666	373	FIG1
YZU-75-6B	75	5.5	11	440	248	4-38	530	396	240	40	472	845	454	FIG1
YZU-75-6B1	75	5.5	12.1	320	120	6-32	420	310	200	31	402	720	373	FIG2
YZU-75-6B2	75	5.5	11	380	125	6-38	450	330	220	37	435	772	419	FIG2
YZU-100-6B	100	7.5	16	440	140	6-34	530	396	240	40	472	845	453	FIG2
YZU-100-6B1	100	7.5	16	440	140	6-45	530	396	240	40	472	845	453	FIG2

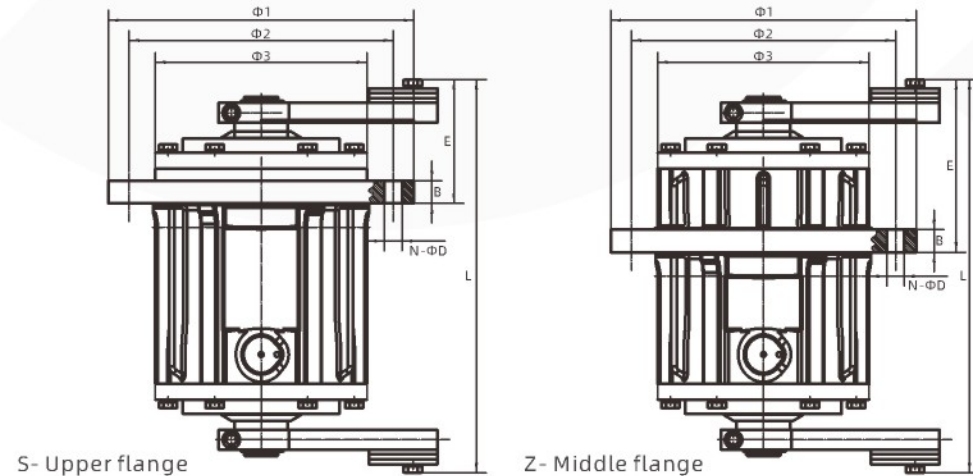
# YZUL SERIES THREE PHASE ASYNCHRONOUS VIBRATION MOTOR

1. Reasonable design, excellent material selection, high efficiency, low temperature rising and prolong lifespan.
2. The excitation force and output are well coordinated, the body is light weight, the starting torque is large, and the volume is small.
3. The noise is lower because of using the smooth rotation to generate vibration.
4. The exciting force can be adjusted only by adding or reducing the number of the adjustment blocks or adjusting the angle of the eccentric blocks.
5. By adjusting the phase angle of the upper and lower eccentric blocks, the trajectory of the material can be effectively changed, and the residence time of the material can be extended or shortened to produce a circular or elliptical compound to meet the requirements of rotary vibrating screen, rotary vibrating cleaning machine, and vibrating finishing machine, vibrating crusher, vibrating mixer and other vibration requirements.
6. Customers can choose the disc-type adjustment structure according to their needs. The upper or the lower discs can be chosen individually or be chosen together. The disc is engraved with angles, and the angles of the upper and lower two eccentric blocks can be adjusted individually or synchronously, which can realize multi-angle, multi-dimensional, adjustment from 0 to rated excitation force, so the operation is faster and more convenient. Choosing one more efficiency motion trajectory can meet various vibration requirements through the composition, weight, and screening structure of the materials.

## Model Description



## Appearance

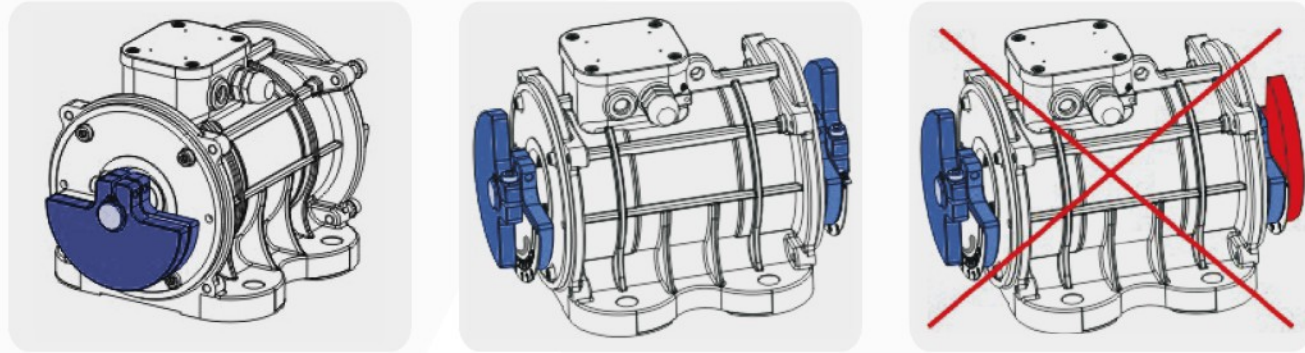


## Main Technical Data

Model	Rated Force (kN)	Rated Power (kW)	Current (A)	Installation Size (mm)							Flange Figure
				Φ1	Φ2	Φ3	B	L	E	N-ΦD	
3 phase 2 pole											
3-2	3	0.25	0.60	230	200	165	16	280	100 130	4-Φ12	S Z
5-2	5	0.40	1.12	230	200	165	16	280	100 130	4-Φ12	S Z
8-2	8	0.75	1.77	245	220	165	18	330	120 155	6-Φ12	S Z
10-2	10	0.90	2.13	275	240	165	20	390	150 195	6-Φ14	S Z
15-2	15	1.30	3.15	315	270	220	23	370	150 180	8-Φ18	S Z
20-2	20	1.70	4.11	315	270	220	23	370	150 180	8-Φ18	S Z
30-2	30	2.20	4.93	375	320	275	23	500	185 235	8-Φ22	S Z
50-2	50	3.70	8.01	440	390	275	26	570	200 260	8-Φ26	S Z
3 phase 4 pole											
3-4	3	0.25	0.61	230	200	165	16	280	100 130	4-Φ12	S Z
5-4	5	0.37	1.06	245	220	165	18	330	120 155	6-Φ12	S Z
8-4	8	0.55	1.58	275	240	165	20	390	150 195	6-Φ14	S Z
10-4	10	0.75	1.87	315	270	220	23	370	150 180	8-Φ18	S Z
15-4	15	1.10	2.62	315	270	220	23	370	150 180	8-Φ18	S Z
20-4	20	1.30	3.35	315	270	220	23	400	160 190	8-Φ18	S Z
30-4	30	1.50	3.85	375	320	275	23	500	185 235	8-Φ22	S Z
50-4	50	2.90	6.95	440	390	275	26	570	200 260	8-Φ26	S Z
3 phase 6 pole											
3-6	3	0.25	0.92	245	220	165	18	350	135 165	6-Φ12	S Z
5-6	5	0.37	1.22	275	240	165	20	420	165 205	6-Φ14	S Z
8-6	8	0.55	1.84	315	270	220	23	400	160 190	8-Φ18	S Z
10-6	10	0.75	2.22	315	270	220	23	415	170 200	8-Φ18	S Z
15-6	15	1.10	3.13	375	320	275	23	560	195 245	8-Φ22	S Z
20-6	20	1.50	4.05	375	320	275	23	560	195 245	8-Φ22	S Z
30-6	30	2.20	6.20	440	390	275	26	610	220 280	8-Φ26	S Z

# INSTALL AND USE

## EXCITATION FORCE REGULATION

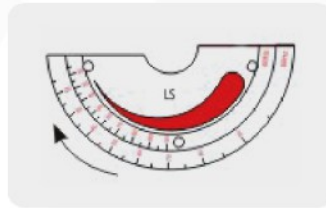


100% exciting force

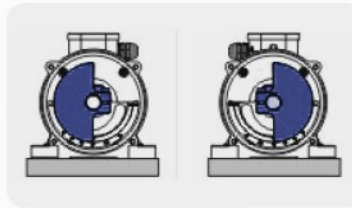
Correct adjustment

Correct adjustment

Adjust the required excitation force according to the eccentric block indicator: always adjust from the thick mark to the thin mark.

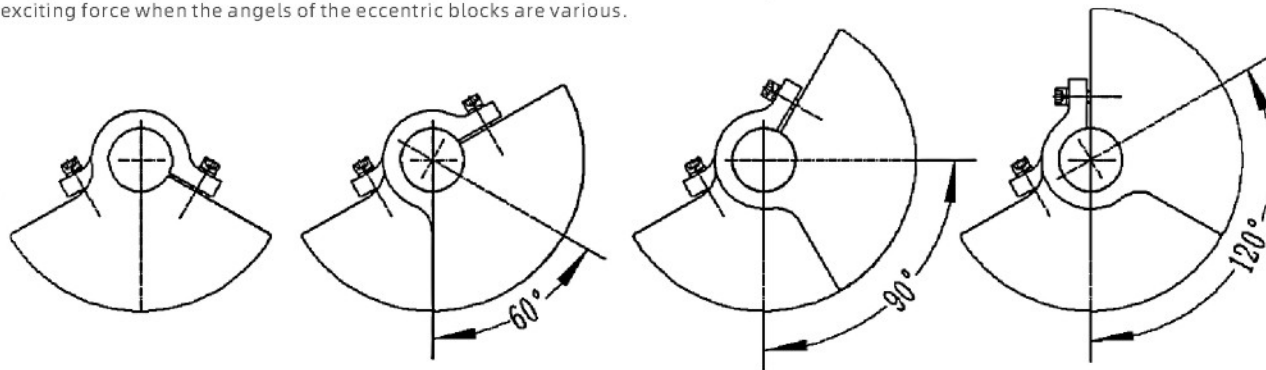


The rotation direction of the eccentric block is opposite to that of the terminal.



## Adjustment Table of Exciting Force

Each end of the vibration motor has a fixed eccentric block and an adjustable eccentric block. Adjusting the angle between the adjustable eccentric block and the fixed eccentric block can change the strength of the exciting force. The factory mode is that the angle of the eccentric block is 0° while the rated exciting force  $F$  is the exciting force. The below table will show the difference of exciting force when the angles of the eccentric blocks are various.



Adjustable rotation angle of the eccentric blocks	0°	60°	90°	120°
Exciting force	$F$	$0.866F$	$0.707F$	$0.5F$

Notes: When adjusting the excitation force, the adjustable eccentric blocks at both ends should be adjusted to the same direction and the same angle.

## VIBRATION MOTOR INSTALLATION

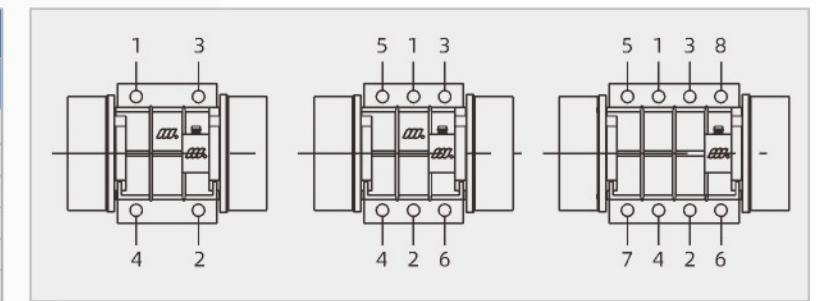
Before installing the vibration motor, all power supply to the equipment should be cut off and locked out, and a warning sign should be given.

1. Before installation, check whether there is any damage or damp during transportation, and whether the fasteners are loose or not.
2. Check whether the data on the nameplate meets the requirements. If the user has no special requirements, the position of the eccentric block of the vibrating motor produced by our company is pointing to the maximum exciting force of the nameplate.
3. The installation surface of vibration motor must be firm and flat, and the flatness of the installation surface should be lower than 0.08mm (in this way, the internal stress generated by the shell of our vibration motor is the smallest when the installation bolts are tightened). The flat plate should not have air holes or cracks. The installation surface should not be smaller than the foot surface of vibration motor. Welding should be avoided in the installation surface, which will affect the flatness of the installation surface of vibration motor.
4. To make sure that there is no paint and sundries on the installation surface, and to ensure that the foot surface of vibration motor is clean. Note: After the vibration motor has been installed and wired, no welding should be performed on the mounting plate. Welding may cause damage to the windings and bearings of vibration motor.
5. The 4-foot bolts of vibration motor, which should be selected according to the hole diameter, are high strength bolts whose level is not lower than 8.8, and they should be tightened reliably with a wrench, and anti-loosening measures should be adopted to prevent any loosening. H80~110 should adopt the anti-loosening structure of the flat pad. H140~240 should generally be fastened with flat pads and double nuts to prevent loosening. Tighten the mounting bolts in the sequence shown in Figure 2. If the screw is not tightened in the specified sequence, the vibration motor may be damaged. Thread glue should be applied to all the bolts before installing the vibrating motor on the mounting plate.
6. Table 1 has given the tightening torque of various related bolts, and the user must tighten the foot bolts according to the corresponding torque during installation.
7. Vibration motor has anti-drop mounting holes near the junction box. A chain hook is recommended to fasten the vibration motor when the motor is installed higher than 0.2 meters from the ground, which can prevent the motor falling if 4- or 6-foot bolts are loose, so equipment damage and safety accidents can be avoided.
8. After the motor had been running for 10 to 20 minutes, to check the bolt tightening torque. Tighten again if necessary.

Sheet 1 - The torque-tightening requirements for fastening bolts

Metric System			
Bolt specification	Tightening torque (kgm)	Bolt specification	Tightening torque (kgm)
M6	1	M22	56
M8	2.3	M24	71
M10	5	M27	89
M12	8	M36	190
M16	19	M42	290
M20	38		

Figure 1



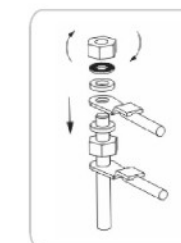
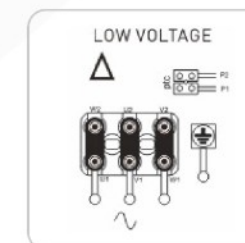
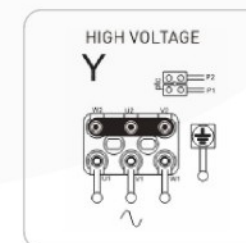
## Electrical Connections

Make sure the voltage and frequency match the values on the vibration motor nameplate. Pass the power cord through the cable connector, and the nominal section of the cable conductor should meet the required requirements. Please connect the wires strictly according to the diagram and tighten the wire nuts with the torque shown in the diagram.

Note that the yellow-green double-colored wire in the power cord should be reliably grounded! Before closing the junction box cover, make sure that the gasket is positioned correctly to reach the protection degree.

For more installation information, please refer to the product instruction manual.

## Wiring Diagram



Terminal Nut Torque		
Screw Bolt	Nm	ft*lb
M4	2.5	1.84
M5	4	2.95
M6	5	3.69
M8	6	4.43
M10	8	5.90

## Overload Protection

All vibration motors must be equipped with an external overload protection device. Every motor needs to be equipped with an overload protection device while two vibration motors are running at the same time, and this two overload protection devices are linked, it means that one motor stops running, and the other one will stop running, too.